

QUICK REFERENCE

**QUICK REFERENCE
SECTION**

CROSS REFERENCE CHART

NORTH AMERICAN COMPONENTS

John Deere Cross & Brg Kit Stock #	John Deere Aftmkt. U-Joint Series	John Deere U-Joint Series	APC/Wesco U-Joint Series	Chainbelt U-Joint Series	G&G U-Joint Series	Neapco U-Joint Series	Rockwell U-Joint Series	Spicer U-Joint Series
PM200-0100							1FR	
PM200-0300							3DR	
PM200-0600	6	L6W/6RW	6N 6R	–	6N	L600	L6N	–
PM200-0675						0675		
PM200-0700		W						
PM200-1000								1000
PM200-1200	12	12RW 12R	12N	R12N R31N/120	12N	1200	L12N	1140
PM200-1400	14	14R/GN 14NW	14N	R14N/140	14N	2000	L14N	1240
PM200-1875						1800		
PM200-2600						2600		1480
PM200-3500	35	35RW/35R DN/35NW	35N	R35N/350	35N	2200	35N	1340
PM200-4400	44	44R	44N	440	44R	44R	44R	1440
PM200-5500	55	L55/55NW 55R	–	–	55N	–	55N	–

QUICK REFERENCE SECTION

METRIC COMPONENTS

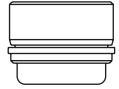
Cross & Bearing
R-Kit Stock #

Cross & Bearing
E-KIT Stock No.

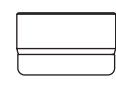
Interchanges with
Bondioli & Pavesi Series

Interchanges with
Walterscheid Series

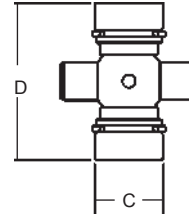
QUICK REFERENCE for Cross & Bearing Kits



A Snap Ring located in the bushing (Internal)



B Snap Ring located in the yoke (External)



C - Bearing Diameter
D - Cap to Cap Length

NORTH AMERICAN

JOHN DEERE (R) STOCK No.	JOHN DEERE (E) STOCK No.	SERIES	(R) Kit RATED H/P @ 540 RPM	(E) Kit RATED H/P @ 540 RPM	(R) Kit RATED H/P @1000 RPM	(E) Kit RATED H/P @1000 RPM	(C) BEARING DIAMETER	(D) CAP TO CAP OVERALL LENGTH	SNAP RING TYPE	PAGE No.
PM200-0100	N/A	Rockwell 1FR	N/A	N/A	N/A	N/A	7/8" (.88)	2 15/16" (2.94)	B	78
PM200-0300	N/A	Rockwell 3DR	N/A	N/A	N/A	N/A	1" (1.0)	3 15/16" (3.94)	B	78
PM200-0600	PM201-0600	6	14	19	21	29	31/32" (.97)	2 9/32" (2.28)	A	44
PM200-0675	N/A	0675	16	N/A	24	N/A	15/16" (.94)	2 5/16" (2.31)	A	74
PM200-0700	N/A	W	N/A	N/A	N/A	N/A	9/16" (.56)	1 1/2" (1.5)	Pin & Block	72
PM200-1000	N/A	1000	15	N/A	24	N/A	15/16" (.94)	2 23/64" (2.36)	A	75
PM200-1200	PM201-1200	12	19	26	29	40	1 1/16" (1.06)	2 1/2" (2.5)	A	49
PM200-1400	PM201-1400	14	28	38	44	58	1 1/8" (1.13)	2 5/8" (2.63)	B	54
PM200-1401 (Interchanges w/ Howse)		14	28	38	44	58	1 1/8" (1.13)	2 5/8" (2.63)	A	78
PM200-1875	N/A	1800	30	N/A	48	N/A	1" (1.0)	3 7/32" (3.22)	A	78
PM200-2600	N/A	2600	100	N/A	144	N/A	1 3/8" (1.38)	4 3/16" (4.19)	B	79
PM200-3500	PM201-3500	35	51	70	79	108	1 1/4" (1.25)	3 7/32" (3.22)	B	58
PM200-3501 (Interchanges w/ Howse)		35	51	70	79	108	1 1/4" (1.25)	3 7/32" (3.22)	A	78
PM200-4400	PM201-4400	44	77	103	119	158	1 5/16" (1.31)	4" (4.0)	A	64
PM200-5500	PM201-5500	55	106	137	164	211	1 17/32" (1.53)	4 5/16" (4.31)	B	69

ITALIAN SERIES

JOHN DEERE (R) STOCK No.	JOHN DEERE (E) STOCK No.	SERIES	(R) Kit RATED H/P @ 540 RPM	(E) Kit RATED H/P @ 540 RPM	(R) Kit RATED H/P @1000 RPM	(E) Kit RATED H/P @1000 RPM	(C) BEARING DIAMETER	(D) CAP TO CAP OVERALL LENGTH	SNAP RING TYPE	PAGE No.
PM200-6154	PM201-6154	1	15	19	23	29	22.0 mm (.8661)	54.0 mm (2.126)	B	88
PM200-8261	PM201-8261	2	21	25	33	38	23.8 mm (.737)	61.2 mm (2.409)	B	91
PM200-8370	PM201-8370	3	29	38	44	58	27.0 mm (1.063)	70.0 mm (2.756)	B	94
PM200-8474	PM201-8474	4	36	45	56	70	27.0 mm (1.063)	74.6 mm (2.937)	B	97
PM200-6580	PM201-6580	5	52	65	81	100	30.2 mm (1.189)	79.4 mm (3.134)	B	100
PM200-8692	PM201-8692	6	64	79	99	122	30.2 mm (1.189)	92.0 mm (3.661)	B	104
PM200-6794	PM201-6794	7N	79	94	122	145	34.9 mm (1.374)	4.0 mm (3.701)	B	106
PM200-6806	PM201-6806	8	100	120	154	185	34.9 mm (1.374)	106.5 mm (4.193)	B	109
PM200-6908	PM201-6908	9	120	151	185	232	41.0 mm (1.614)	108.0 mm (4.252)	B	112

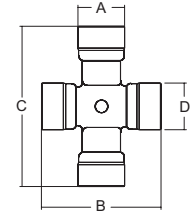
GERMAN SERIES

JOHN DEERE (R) STOCK No.	JOHN DEERE (E) STOCK No.	SERIES	(R) Kit RATED H/P @ 540 RPM	(E) Kit RATED H/P @ 540 RPM	(R) Kit RATED H/P @1000 RPM	(E) Kit RATED H/P @1000 RPM	(C) BEARING DIAMETER	(D) CAP TO CAP OVERALL LENGTH	SNAP RING TYPE	PAGE No.
PM200-7155	PM201-7155	2100	16	19	23	29	22.0 mm (.8661)	54.8 mm (2.158)	B	115
PM200-8261	PM201-8261	2200	21	25	33	38	23.8 mm (.737)	61.2 mm (2.409)	B	117
PM200-8370	PM201-8370	I	30	38	44	58	27.0 mm (1.063)	70.0 mm (2.756)	B	119
PM200-8474	PM201-8474	2300	37	45	56	70	27.0 mm (1.063)	74.6 mm (2.937)	B	121
PM200-8692	PM201-8692	220	64	79	99	122	30.2 mm (1.189)	92.0 mm (3.661)	B	124
PM200-7676	PM201-7676	2400	53	66	80	102	32.0 mm (1.259)	76.0 mm (2.992)	B	126
PM200-7989	PM201-7989	2500	80	94	124	144	36.0 mm (1.417)	88.8 mm (3.496)	B	129
PM200-7004	PM201-7004	2600	113	149	175	230	42.0 mm (1.654)	104.0 mm (4.095)	B	132

QUICK REFERENCE SECTION

Constant Velocity Cross & Bearing Kits

Quick Reference



UNEQUAL ARM C.V. KITS

80° NORTH AMERICAN

JOHN DEERE (R) STOCK No.	JOHN DEERE (E) STOCK No.	CATEGORY	SERIES	(A) BEARING DIAMETER	(B) CAP TO CAP OVERALL LENGTH	(C) CAP TO CAP OVERALL LENGTH	(D) BEARING DIAMETER	PAGE No.
PM200-1430	PM201-1430	3	14	1 1/8" (1.13)	2 5/8" (2.63)	4 1/4" (4.25)	1 1/8" (1.13)	145
PM200-3540	PM201-3540	4	35	1 1/8" (1.13)	3 7/32" (3.22)	4 1/4" (4.25)	1 1/4" (1.25)	148
PM200-3545	PM201-3545	5	35/44	1 1/4" (1.25)	3 7/32" (3.22)	4 5/16" (4.31)	1 1/4" (1.25)	151
PM200-5556	PM201-5556	6	55	1 5/16" (1.31)	3 23/32" (3.72)	4 5/16" (4.31)	1 17/32" (1.53)	153

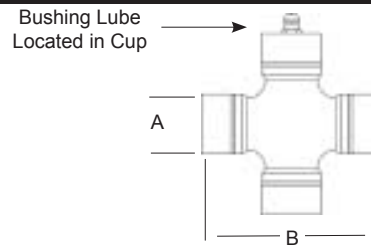
80° GERMAN SERIES

JOHN DEERE (R) STOCK No.	JOHN DEERE (E) STOCK No.	SERIES	(A) BEARING DIAMETER	(B) CAP TO CAP OVERALL LENGTH	(C) CAP TO CAP OVERALL LENGTH	(D) BEARING DIAMETER	PAGE No.
PM200-7491	PM201-7491	Metric 2380	27mm (1.063)	74.6mm (2.94)	91mm (3.583)	23.8mm (.737)	159
PM200-7694	PM201-7694	Metric 2480	32mm (1.259)	76mm (2.992)	94mm (3.701)	27mm (1.063)	161
PM200-7906	PM201-7906	Metric 2580	36mm (1.417)	88.8mm (3.496)	106mm (4.173)	32mm (1.259)	164

80° EQUAL ARM WORLD WIDE C.V. KITS

Equal Arm C.V. Kits are not interchangeable with Unequal Arm C.V. Kits

JOHN DEERE (R) STOCK No.	ASAE CATEGORY	(A) BEARING DIAMETER	(B) CAP TO CAP OVERALL LENGTH
PM203-0310	Category 3	27.0mm (1.06)	81.7mm (3.22)
PM203-8692	Category 4	30.22mm (1.19)	92.0mm (3.63)
PM203-6806	Category 6	34.94mm (1.38)	106.5mm (4.20)



QUICK REFERENCE SECTION

NORTH AMERICAN SHAFTING & TUBING

North American Shaft



Stock Number	Size	Length
PM400-0012	3/4" Sq.	6'
PM400-0014	7/8" Sq.	6'
PM400-0015	15/16" Sq.	6'
PM400-0016	1" Sq.	6'
PM400-0019	1 3/16" Sq.	6'
PM400-0020	1 1/4" Sq.	6'
PM400-0021	1 5/16" Sq.	6'
PM400-1214	3/4" x 7/8" Rect.	6'
PM400-1618	1" x 1 1/8" Rect.	6'
PM401-0019	1 3/16" Sq.	10'
PM401-0021	1 5/16" Sq.	10'
PM401-1214	3/4" x 7/8" Rect.	10'
PM401-1618	1" x 1 1/8" Rect.	10'
PM402-0014	7/8" Hex	6'
PM402-0016	1" Hex	6'
PM402-0018	1 1/8" Hex	6'
PM402-0020	1 1/4" Hex	6'
PM404-0019	1 3/16" Sq.	3'
PM404-0021	1 5/16" Sq.	3'
PM404-1214	3/4" x 7/8" Rect.	3'
PM404-1615H	1" x 15 Spl. (Induction Hardened)	3'
PM404-1618	1" x 1 1/8" Rect.	3'
PM404-2120	1 5/16" x 20 Spl. (Induction Hardened)	3'
PM404-2720	1 11/16" x 20 Spl. (Induction Hardened)	3'

North American Tube

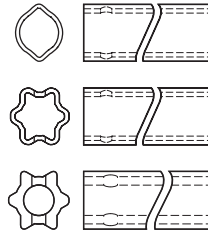


Stock Number	Size	Length
PM600-0012	1" Sq. Fits Shaft 3/4" Sq.	6'
PM600-0015	1 1/4" Sq. (.120 Wall) Fits Shaft 15/16"	6'
PM600-0016	1 1/4" Sq. (.109 Wall) Fits Shaft 1" Sq.	6'
PM600-0020	1 5/8" Sq. Fits Shaft 1.25" Sq.	6'
PM600-1618	1" x 1 x 1/8" Rect.O.D - Fits Shaft 3/4" x 7/8"	6'
PM600-2022	1 1/4" x 1 3/8" Rect.O.D - Fits Shaft 1" x 1 1/8"	6'
PM601-1618	1" x 1 1/8" Rect.O.D - Fits Shaft 3/4" x 7/8"	10'
PM601-2022	1 1/4" x 1 3/8" Rect.O.D - Fits Shaft 1" x 1 1/8"	10'
PM602-0600	1 1/2" Rd. (.065 Wall) O.D.	6'
PM602-1400	2" Rd. (.083 Wall) O.D.	6'
PM602-2600	2 3/4" Rd. (.109 Wall) O.D.	6'
PM602-3500	2 1/8" Rd. (.120 Wall) O.D.	6'
PM602-3501	2 1/8" Rd. (.083 Wall) O.D.	6'
PM602-4400	2 1/2" Rd. (.120 Wall) O.D.	6'
PM603-1400	2" Rd. (.083 Wall) O.D.	10'
PM603-3500	2 1/8" Rd. (.120 Wall) O.D.	10'
PM603-4400	2 1/2" Rd. (.120 Wall) O.D.	10'
PM604-0600	1 1/2" Rd. (.065 Wall) O.D.	3'
PM604-1400	2" Rd. (.083 Wall) O.D.	3'
PM604-1618	1" x 1 1/8" Rect.O.D - Fits Shaft 3/4" x 7/8"	3'
PM604-2022	1 1/4" x 1 3/8" Rect. O.D - Fits Shaft 1" x 1 1/8"	3'
PM604-3500	2 1/8" Rd. (.120 Wall) O.D.	3'
PM604-4400	2 1/2" Rd. (.120 Wall) O.D.	3'

METRIC PROFILE SHAFTING & TUBING

SERIES	STOCK			USE AS
	NO.	METERS	INCHES	
ByPy 1	PM400-6126	1.5	59 1/16"	Inner
ByPy 1	PM404-6126	1.0	39 3/8"	Inner
ByPy 1	PM600-6133	1.5	59 1/16"	Outer
ByPy 1	PM604-6133	1.0	39 3/8"	Outer
ByPy 2	PM400-6229	1.5	59 1/16"	Inner
ByPy 2	PM404-6229	1.0	39 3/8"	Inner
ByPy 2	PM600-6236	1.5	59 1/16"	Outer
ByPy 2	PM604-6236	1.0	39 3/8"	Outer
ByPy 3	PM600-6236	1.5	59 1/16"	Inner
ByPy 3	PM604-6236	1.0	39 3/8"	Inner
ByPy 3 & 4	PM600-6343	1.5	59 1/16"	Outer
ByPy 3 & 4	PM604-6343	1.0	39 3/8"	Outer
ByPy 4	PM400-6436	1.5	59 1/16"	Inner
ByPy 4	PM404-6436	1.0	39 3/8"	Inner
ByPy 5 & 6	PM400-6545	1.5	59 1/16"	Inner
ByPy 5 & 6	PM404-6545	1.0	39 3/8"	Inner
ByPy 5	PM600-6552	1.5	59 1/16"	Outer
ByPy 5	PM604-6552	1.0	39 3/8"	Outer
ByPy 6 & 7N	PM600-6654	1.5	59 1/16"	Outer
ByPy 8	PM600-6654	1.5	59 1/16"	Inner
ByPy 6 & 7N	PM604-6654	1.0	39 3/8"	Outer
ByPy 8	PM604-6654	1.0	39 3/8"	Inner
ByPy 7N	PM400-6745	1.5	59 1/16"	Inner
ByPy 7N	PM404-6745	1.0	39 3/8"	Inner
ByPy 9	PM400-6954	1.5	59 1/16"	Inner
ByPy 9	PM404-6954	1.0	39 3/8"	Inner
ByPy 8 & 9	PM600-6863	1.5	59 1/16"	Outer
ByPy 8 & 9	PM604-6863	1.0	39 3/8"	Outer
W/S 2100	PM400-7123	1.5	58 1/16"	Inner
W/S 2100	PM404-7123	1.0	39 3/8"	Inner
W/S 2100	PM600-7130	1.5	59 1/16"	Outer
W/S 2100	PM604-7130	1.0	39 3/8"	Outer
W/S I, 2200 & 2300	PM400-7234	1.5	59 1/16"	Inner
W/S I, 2200 & 2300	PM404-7234	1.0	39 3/8"	Inner
W/S I, 2200 & 2300	PM600-7241	1.5	59 1/16"	Outer
W/S I, 2200 & 2300	PM604-7241	1.0	39 3/8"	Outer
W/S 2400 (Lemon) & 220/720	PM400-7539	1.5	59 1/16"	Inner
W/S 2400 (Lemon) & 220/720	PM404-7539	1.0	39 3/8"	Inner
W/S 2400 (Lemon) & 220/720	PM600-7548	1.5	59 1/16"	Outer
W/S 2400 (Lemon) & 220/720	PM604-7548	1.0	39 3/8"	Outer
W/S 2400 & W/S 2500 (Star)	PM400-7651	1.5	59 1/16"	Inner
W/S 2400 & W/S 2500 (Star)	PM404-7651	1.0	39 3/8"	Inner
W/S 2400 & W/S 2500 (Star)	PM600-7961	1.5	59 1/16"	Outer
W/S 2400 & W/S 2500 (Star)	PM604-7961	1.0	39 3/8"	Outer
W/S 2600 (Star)	PM600-7961	1.5	59 1/16"	Inner
W/S 2600 (Star)	PM604-7961	1.0	39 3/8"	Inner
W/S 2600 (Star)	PM600-7071	1.5	59 1/16"	Outer
W/S 2600 (Star)	PM604-7071	1.0	39 3/8"	Outer

GERMAN-STYLE SHAFTING & TUBING



Lemon & Star Profile

ITALIAN-STYLE SHAFTING & TUBING

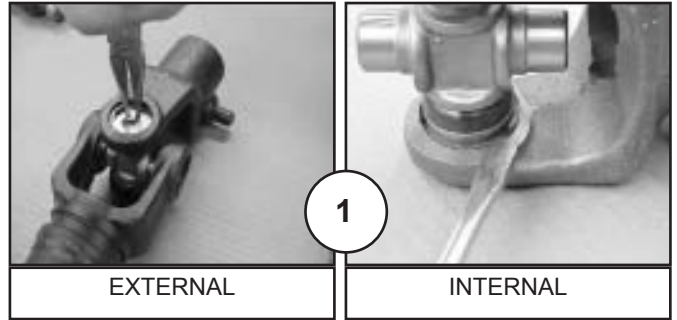


Tri-Lobe Profile

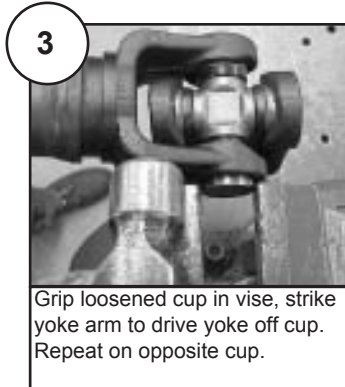
UNIVERSAL JOINT REPLACEMENT

TO DISASSEMBLE UNIVERSAL JOINT

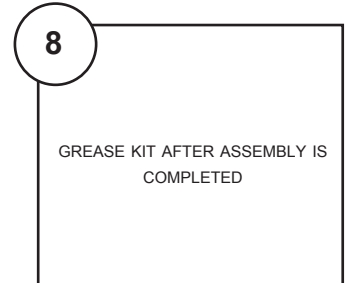
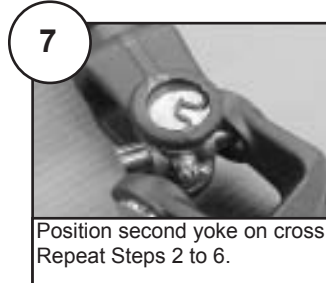
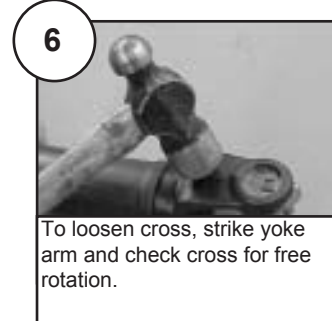
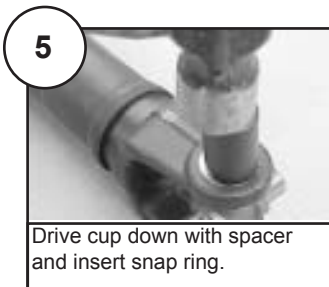
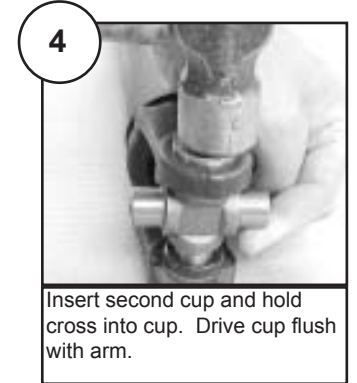
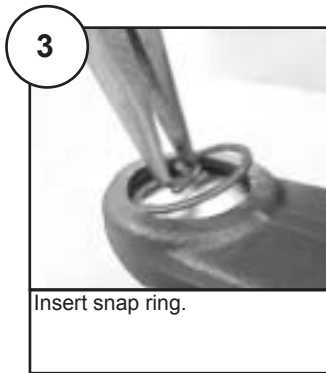
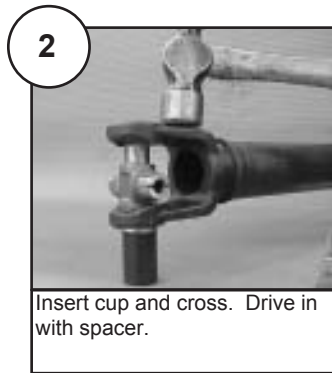
1. Remove all snap rings



QUICK REFERENCE SECTION



TO REASSEMBLE UNIVERSAL JOINT



EASY LOCK GUARDING SYSTEM



QUICK REFERENCE SECTION

NORTH AMERICAN

SERIES	OLD GUARDS	OLD NYLON BEARING KITS	NEW GUARDS	NEW NYLON BEARING KITS
6	PM900-0648	PM920-0600/PM920-4P15	PM900-2548	PM921-0600
	PM900-0660	PM920-0600/PM920-4P15	PM900-2560	PM921-0600
W	PM900-0748	PM920-0141	PM900-2548	PM921-5170
12	PM900-1248	PM920-1200/PM920-4P16	PM900-2548	PM921-1200
	PM900-1260	PM920-1200/PM920-4P16	PM900-2560	PM921-1200
14	PM900-1248	PM920-1200/PM920-5071	PM900-2548	PM921-1200
	PM900-1260	PM920-1200/PM920-5071	PM900-2560	PM921-1200
35	PM900-3548	PM920-3500/PM920-5084	PM900-2548	PM921-1200
	PM900-3560	PM920-3500/PM920-5084	PM900-2560	PM921-1200
44	PM900-4448	PM920-4400	PM902-3548	PM921-4400
	PM900-4460	PM920-4400	PM902-3560	PM921-4400
55	PM900-4448	PM920-4400	PM902-3548	PM921-4400
	PM900-4460	PM920-4400	PM902-3560	PM921-4400

PLEASE NOTE!

- *Not all guard and nylon bearing systems are interchangeable. When purchasing shaft weld and tube weld yokes or guards, make certain there is a proper fit between nylon bearing raceway in yoke and guard. Make sure guard rotates freely on the yokes.*
- *The nylon bearings provided are the most popular in the replacement market. If the nylon bearing provided is not a proper fit, it is essential that the proper nylon bearing is identified and installed to insure proper performance and safety. To assist in ordering the proper nylon bearing, listed in this brochure are stock numbers and dimensions for nylon bearings.*
- *All Series North American guards are provided without nylon bearings. To help assure the proper set of nylon bearings are installed, one nylon bearing set will be exactly the same (nylon bearing raceway dimensions) as has always been provided in our aftermarket guards. The other set will be dimensioned to retrofit the John Deere OEM raceway. Assembly instructions included with these nylon bearing kits.*
- **ALL GUARDS ARE PROVIDED WITHOUT NYLON BEARINGS - ORDER NYLON BEARINGS SEPARATELY**

EASY LOCK GUARDING SYSTEM

METRIC

INTERCHANGES with SERIES	OLD GUARDS	OLD NYLON BEARING KITS	NEW GUARDS	NEW NYLON BEARING KITS
BYPY 1	PM900-8134	PM960-0101	PM900-2548	PM961-5029
	PM900-8148	PM960-0101	PM900-2548	PM961-5029
	PM900-8154	PM960-0101	PM900-2560	PM961-5029
BYPY 2	PM900-8234	PM960-0202	PM900-2548	PM961-2502
	PM900-8248	PM960-0202	PM900-2548	PM961-2502
	PM900-8254	PM960-0202	PM900-2560	PM961-2502
BYPY 3 & 4	PM900-8234	PM960-0234	PM900-2548	PM961-2534
	PM900-8248	PM960-0234	PM900-2548	PM961-2534
	PM900-8254	PM960-0234	PM900-2560	PM961-2534
BYPY 5	PM900-8534	PM960-0305	PM902-3548	PM961-3505
	PM900-8548	PM960-0305	PM902-3548	PM961-3505
	PM900-8554	PM960-0305	PM902-3560	PM961-3505
BYPY 6	PM900-8634	PM960-0467	PM902-3548	PM961-3567
	PM900-8648	PM960-0467	PM902-3548	PM961-3567
	PM900-8654	PM960-0467	PM902-3560	PM961-3567
BYPY 7	PM900-8634	PM960-0467	PM902-3548	PM961-3567
	PM900-8648	PM960-0467	PM902-3548	PM961-3567
	PM900-8654	PM960-0467	PM902-3560	PM961-3567
BYPY 8 & 9	PM900-6934	PM960-0489	PM900-4548	PM961-4589
	PM900-6948	PM960-0489	PM900-4548	PM961-4589
	PM900-6954	PM960-0489	PM900-4560	PM961-4589
W/S 2100 (AW10)	PM900-8134	PM960-0105	PM900-2548	PM961-5005
	PM900-8148	PM960-0105	PM900-2548	PM961-5005
	PM900-8154	PM960-0105	PM900-2560	PM961-5005
W/S 2200 (AW20) & W/S I (AWII)	PM900-8234	PM960-0215	PM900-2548	PM961-0251
	PM900-8248	PM960-0215	PM900-2548	PM961-0251
	PM900-8254	PM960-0215	PM900-2560	PM961-0251
W/S 2300 (AW21)	PM900-8234	PM960-0215	PM900-2548	PM961-0251
	PM900-8248	PM960-0215	PM900-2548	PM961-0251
	PM900-8254	PM960-0215	PM900-2560	PM961-0251
W/S 220 (AW22), W/S 2400 (AW35) & W/S 2500 (AW36)	PM900-8534	PM960-0325	PM902-3548	PM961-3525
	PM900-8548	PM960-0325	PM902-3548	PM961-3525
	PM900-8554	PM960-0325	PM902-3560	PM961-3525
W/S 2600 (AW26)	PM900-8634	PM960-0435	PM900-4548	PM961-4535
	PM900-8648	PM960-0435	PM900-4548	PM961-4535
	PM900-8654	PM960-0435	PM900-4560	PM961-4535

NYLON BEARING REPAIR KITS

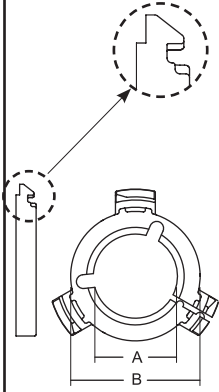
TYPE A - FITS 250 GUARDS

NORTH AMERICAN SERIES

STOCK No.	SERIES	GUARD TYPE	DIM A INNER BRG. ID	DIM B INNER BRG. OD	DIM A OUTER BRG. ID	DIM B OUTER BRG. OD
PM921-0600	6	250	46.4-mm (1.83")	71.4-mm (2.81")	46.4-mm (1.83")	71.4-mm (2.81")
PM921-1200	12, 14 & 35	250	52.8-mm (2.08")	71.4-mm (2.81")	52.8-mm (2.08")	71.4-mm (2.81")
PM921-5170	W	250	41.8-mm (1.65")	71.4-mm (2.81")	41.8-mm (1.65")	71.4-mm (2.81")

METRIC SERIES

STOCK No.	INTERCHANGES W/SERIES	GUARD TYPE	DIM A INNER BRG. ID	DIM B INNER BRG. OD	DIM A OUTER BRG. ID	DIM B OUTER BRG. OD
PM961-5029	ByPy 1	250	34.5-mm (1.36")	71.4-mm (2.81")	40.4 -mm(1.59")	71.4-mm (2.81")
PM961-2502	ByPy 2	250	40.4-mm (1.59")	71.4-mm (2.81")	47.4-mm (1.87")	71.4-mm (2.81")
PM961-2534	ByPy 3 & 4	250	47.4-mm (1.87")	71.4-mm (2.81")	53.4-mm (2.10")	71.4-mm (2.81")
PM961-5005	W/S 2100	250	41.4-mm (1.63")	71.4-mm (2.81")	41.4-mm (1.63")	71.4-mm (2.81")
PM961-0251	W/S 2200, W/S I & W/S 2300	250	50.8-mm (2.00")	71.4-mm (2.81")	50.8-mm (2.00")	71.4-mm (2.81")



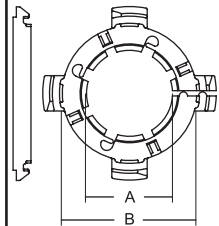
TYPE B - FITS 350/450 GUARDS

NORTH AMERICAN SERIES

STOCK No.	SERIES	GUARD TYPE	DIM A INNER BRG. ID	DIM B INNER BRG. OD	DIM A OUTER BRG. ID	DIM B OUTER BRG. OD
PM921-4400	44 & 55	350	67.2-mm (2.65")	83.6-mm (3.29")	67.2-mm (2.65")	83.6-mm (3.29")

METRIC SERIES

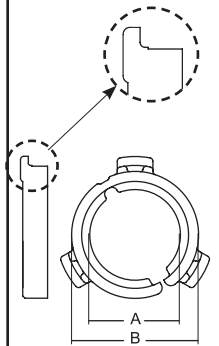
STOCK No.	INTERCHANGES W/SERIES	GUARD TYPE	DIM A INNER BRG. ID	DIM B INNER BRG. OD	DIM A OUTER BRG. ID	DIM B OUTER BRG. OD
PM961-3505	ByPy 5	350	53.5-mm (2.11")	83.6-mm (3.29")	62.7-mm (2.47")	83.6-mm (3.29")
PM961-3567	ByPy 6 & 7	350	59.4-mm (2.34")	83.6-mm (3.29")	68.4-mm (2.69")	83.6-mm (3.29")
PM961-4589	ByPy 8 & 9	450	68.4-mm (2.69")	103-mm (4.06")	80.4-mm (3.17")	103-mm (4.06")
PM961-3525	W/S 220, W/S 2400, & W/S 2500	350	62.5-mm (2.46")	83-mm (3.27")	62.5-mm (2.46")	83-mm (3.27")
PM961-4535	W/S 2600	450	82.8-mm (3.26")	103-mm (4.05")	82.8-mm (3.26")	103-mm (4.05")



TYPE C

PREVIOUS-STYLE METRIC NYLON BEARING KIT

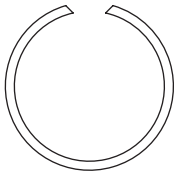
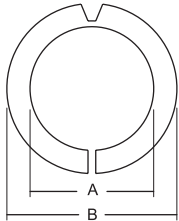
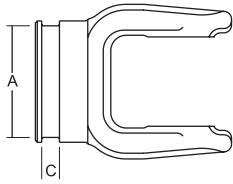
INTERCHANGES W/ STOCK No.	SERIES	DIM A INNER BRG. ID	DIM B INNER BRG. OD	DIM A OUTER BRG. ID	DIM B OUTER BRG. OD
PM960-0101	ByPy 1	34.8-mm (1.37")	57-mm (2.24")	40.8-mm (1.61")	57-mm (2.24")
PM960-0202	ByPy 2	40.4-mm (1.59")	71.4-mm (2.81")	47.4-mm (1.87")	71.4-mm (2.81")
PM960-0234	ByPy 3 & 4	47.4-mm (1.87")	71.4-mm (2.81")	53.4-mm (2.10")	71.4-mm (2.81")
PM960-0305	ByPy 5	53.4-mm (2.10")	81.7-mm (3.22")	62.7-mm (2.47")	81.7-mm (3.22")
PM960-0467	ByPy 6 & 7	59.4-mm (2.34")	98.8-mm (3.89")	68.4-mm (2.69")	98.8-mm (3.89")
PM960-0489	ByPy 8 & 9	68.4-mm (2.69")	98.8-mm (3.89")	80.4-mm (3.17")	98.8-mm (3.89")
PM960-0105	W/S 2100	41.4-mm (1.63")	57-mm ((2.24")	41.4-mm (1.63")	57-mm ((2.24")
PM960-0215	W/S 2200, AW11, & W/S 2300	50.8-mm (2.00")	71.4-mm (2.81")	50.8-mm (2.00")	71.4-mm (2.81")
PM960-0325	W/S 220, W/S 2400, & W/S 2500	62.7-mm (2.47")	81.7-mm (3.22")	62.7-mm (2.47")	81.7-mm (3.22")
PM960-0435	W/S 2600	82.8-mm (3.26")	98.8-mm (3.89")	82.8-mm (3.26")	98.8-mm (3.89")



QUICK REFERENCE SECTION

EASY LOCK GUARDING SYSTEM

PREVIOUS-STYLE NORTH AMERICAN NYLON BEARING KIT

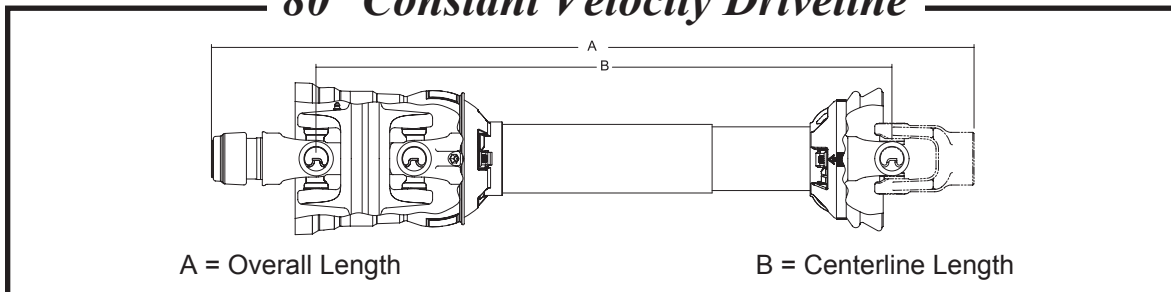


METAL RETAINING RING

STOCK NUMBER	DIM A YOKE RACEWAY O.D. NYLON BEARING I.D.	DIM B NYLON BEARING O.D.	DIM C YOKE RACEWAY WIDTH NYLON BEARING WIDTH
PM920-0017	2.15"(2 5/32")	2.76" (2 3/4")	.36" (23/64")
PM920-0069	1.77"(1 49/64")	2.76" (2 3/4")	.36" (23/64")
PM920-0085	2.02"(2 1/64")	2.76" (2 3/4")	.36" (23/64")
PM920-0102	1.41"(1 13/32")	2.02" (2 1/64")	.30" (19/64")
PM920-0141	1.65"(1 21/32")	2.76" (2 3/4")	.36" (23/64")
PM920-0165	2.15"(2 5/32")	3.26"(3 17/64")	.36" (23/64")
PM920-0195	1.78"(1 25/32")	2.52"(2 33/64")	.37" (3/8")
PM920-0254	1.64"(1 41/64")	2.25" (2 1/4")	.29" (19/64")
PM920-0259	2.03"(2 1/32")	3.26"(3 17/64")	.36" (23/64")
PM920-0260	1.39"(1 25/64")	2.77"(2 49/64")	.36" (23/64")
PM920-0600	1.83"(1 53/64")	2.76" (2 3/4")	.25" (1/4")
PM920-1200	2.09"(2 3/32")	2.77"(2 49/64")	.32" (21/64")
PM920-2600	2.86"(2 55/64")	3.56" (3 9/16")	.34" (11/32")
PM920-3500	2.08"(2 5/64")	2.76" (2 3/4")	.32" (21/64")
PM920-4400	2.65"(2 21/32")	3.26"(3 17/64")	.36" (23/64")
PM920-4P15	1.65"(1 21/32")	2.76" (2 3/4")	.30" (19/64")
PM920-4P16	1.77"(1 49/64")	2.76" (2 3/4")	.36" (23/64")
PM920-5071	2.02"(2 1/64")	2.76" (2 3/4")	.36" (23/64")
PM920-5084	2.15"(2 5/32")	2.76" (2 3/4")	.36" (23/64")

(Kit includes nylon bearing and metal retaining ring)

80° Constant Velocity Driveline



Constant Velocity Driveline Replacement Chart

SAE Category	John Deere Series	Replacement For
3	14	Bondioli & Pavesi 4 Series Walterscheid 2380 Series
4	35	Bondioli & Pavesi 5 Series
5	35/44	Bondioli & Pavesi 6 Series Walterscheid 2480 Series
6	55	Bondioli & Pavesi 8 Series Walterscheid 2580 Series & 2680 Series

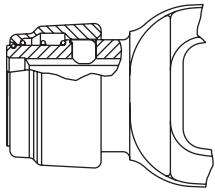
The above chart lists the approximate size replacement for Constant Velocity Drivelines. These are not an exact interchange, and should be used as a general replacement guide only. NOTE: 35/44 refers to CV Series. When CV is assembled with 44 Series tube end driveline becomes a 44 Series. When CV is assembled with a 35 Series tube end driveline is a 35 Series.

1000 Series CROSS REFERENCE

NEAPCO PART NO.	JOHN DEERE STOCK NO.	SPICER PART NO.	JOHN DEERE STOCK NO.
-	PM802-1015	-	PM300-1000
-	PM802-1016	-	PM700-1000
-	PM10001-1036	-	PM10001-1044
1-0170	PM200-1000	-	PM802-1016
10-0322	PM10001-1014	-	PM802-1020
10-0333	PM10001-1012	-	PM10001-1034
10-0383	PM10001-1007	-	PM10001-1042
10-0411	PM801-1018	-	PM10001-1043
10-0412	PM804-1014	-	PM10001-1037
10-0413	PM10001-1045	-	PM10001-1035
10-0422	PM804-1012	-	PM10001-1036
10-0423	PM10001-1056	-	PM806-1013
10-0452	PM804-1016	-	PM10001-1061
10-0463 or 10-4453	PM10001-1049	-	PM806-1019
10-0473	PM800-1015	10-3-122X	PM10001-1015
10-0483	PM800-1016	10-3-163X	PM10001-1013
10-0493	PM10001-1051	10-3-183X	PM10001-1062
10-1532	PM10001-1034	10-3-22X	PM10001-1014
10-1557	PM10001-1037	10-3-33X	PM10001-1012
10-1574	PM806-1019	10-3-51X	PM812-1020
10-1702	PM10001-1039	10-3-83X	PM10001-1007
10-1703	PM10001-1040	10-4-110X	PM102-1006
10-1705	PM10001-1041	10-4-103	PM10001-1053
10-1707	PM10001-1043	10-4-11	PM801-1018
10-1708	PM10001-1044	10-4-113	PM10001-1052
10-1765	PM812-1020	10-4-12	PM804-1014
10-3122	PM10001-1015	10-4-123	PM10001-1054
10-3163	PM10001-1013	10-4-13 or 10-4-133	PM10001-1045
10-3183	PM10001-1062	10-4-153	PM800-1019
10-4123	PM10001-1055	10-4-163	PM800-1017
10-4139	PM102-1006	10-4-183	PM10001-1058
10-4143	PM10001-1053	10-4-193	PM10001-1055
10-4153	PM800-1019	10-4-22	PM804-1012
10-4163	PM800-1017	10-4-23	PM10001-1056
10-4173	PM800-1013	10-4-293	PM10001-1060
10-4183	PM10001-1058	10-4-373	PM800-1010
10-4193	PM10001-1054	10-4-43	PM800-1013
10-4293	PM10001-1060	10-4-443	PM10001-1059
10-4363	PM802-1020	10-4-453 or 10-4-253	PM10001-1049
10-4373	PM800-1010	10-4-481	PM801-1013
10-4443	PM10001-1059	10-4-52	PM804-1016
10-4473	PM10001-1052	10-4-53	PM10001-1057
10-4481	PM801-1013	10-4-573	PM10001-1051
10-4573 or 10-4493	PM10001-1033	10-4-63	PM10001-1048
10-4693	PM10001-1038	10-4-643	PM802-1015
10-4943	PM10001-1057	10-4-693	PM10001-1038
10-5113	PM10001-1048	10-4-703	PM10001-1040
10-5129	PM300-1000	10-4-713	PM10001-1039
10-5131	PM700-1000	10-4-723	PM10001-1041
10-5149	PM10001-1035	10-4-73	PM800-1015
10-5216	PM10001-1061	10-4-83	PM800-1016
10-5313	PM806-1013	10-4-93	PM10001-1033
10-5354	PM10001-1042	HM170	PM200-1000

QUICK REFERENCE SECTION

Locking Device



Safety Slide Lock

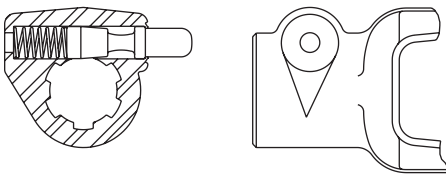
An exclusive John Deere replacement component, the Safety Slide Lock* yoke is locked in place by two hardened pawls with compound radii that conform to the groove

in the shaft for full contact. The device is particularly applicable where there is appreciable end thrust.

Spring-Lok

The collar is spring loaded for ease of installation and positive locking to tractor shaft.

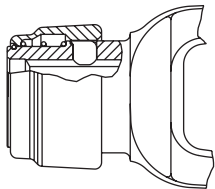
QUICK REFERENCE SECTION



Quick Disconnect

A smooth plunger eliminates sharp projections such as x-washers. Trails rather than leads rotation.

Locking Device Repair Kit



*Auto-Lok/Safety Slide Lock

Stock No. PM13004000

Repair Kit for John Deere Auto-Lok and Safety Slide Lock
6 Spline & 21 Spline

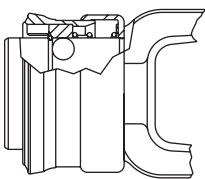
Stock No. PM13004020

Repair Kit for John Deere Auto-Lok and Safety Slide Lock
20 Spline

Stock No. PM13004015

Repair Kit for
1" x 15 Spline

* This repair kit contains both balls & pawls. When repairing the "Safety Slide Lock" use the pawls only and discard the balls. When repairing the "Auto-Lok" use both the balls and the pawls.



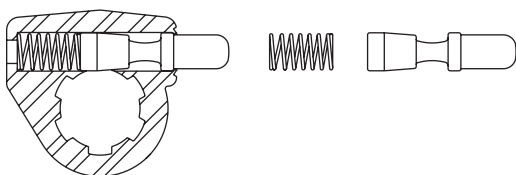
Spring-Lok

Stock No. PM13003100

Repair Kit for John Deere Spring-Lok
6 Spline & 21 Spline

Stock No. PM13003115

1" x 15 Spline



Quick Disconnect

Stock No. PM13002006

Repair Kit for John Deere
and Rockwell 6 Spline

Stock No. PM13002806

Repair Kit for 1 3/4" x 6 Spl.

Stock No. PM13002021

John Deere 21 Spline and
Hex Quick Disconnect

Stock No. PM13002020

John Deere 20 Spline

CONVERSION TABLE

1 inch	=	25.4 mm	1 HP	=	0.746 kW
1 mm	=	0.0394 inch	1 kW	=	1.341 HP
1 lb	=	4.44 N	1 Kg	=	2.305 lb
1 N	=	0.225 lb	1 lb	=	0.454 Kg
1 in•lb	=	0.113 Nm	1 ft•lb	=	1.356 Nm
1 Nm	=	0.738 ft•lb	1 M	=	1000 mm
1 Nm	=	8.85 in•lb	1 ft	=	12 inches
			1 kW	=	1000 Watts

STANDARD UNIT CONVERSION

Power (HP)	=	$\frac{\text{Torque (in}\cdot\text{lb)} \times \text{Shaft Speed (RPM)}}{63,000}$
Torque (in•lb)	=	$\frac{\text{Power (HP)} \times 63,000}{\text{Shaft Speed (RPM)}}$

QUICK REFERENCE
SECTION

METRIC UNIT CONVERSION

Power (kW)	=	$\frac{\text{Torque (Nm)} \times \text{Shaft Speed (RPM)}}{0.00955}$
Torque (Nm)	=	$\frac{\text{Power (kW)} \times 0.00955}{\text{Shaft Speed (RPM)}}$

