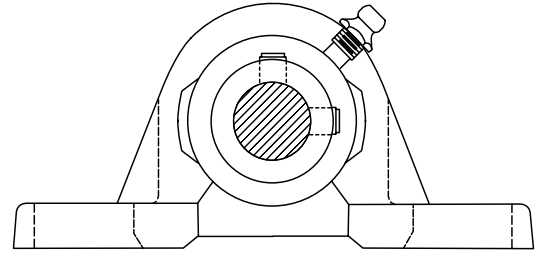




FAFNIR® BALL BEARINGS PILLOW BLOCKS Replacement Bearings for Dodge



SET SCREW LOCKING INDUSTRIAL INSERT

Shaft Size	High Base to Center Height			Shaft Size	Low Base to Center Height		
	DODGE PART DESCRIPTION	DODGE	TIMKEN		DODGE PART DESCRIPTION	DODGE	TIMKEN
1/2"	123753	P2B-SCU-008	YAS 1/2	1/2"	123830	P2B-SC-008	YAK 1/2
5/8"	123754	P2B-SCU-010	YAS 5/8	5/8"	123831	P2B-SC-010	YAK 5/8
17mm	125850	P2B-SCU-17M	YAS 17	17mm	053170	P2B-SC-17M	YAK 17
3/4"	123803	P2B-SC-012	YAS 3/4	3/4"	123860	P2B-SCB-012	YAK 3/4
20mm	125851	P2B-SC-20M	YAS 20	20mm	124941	P2B-SCB-20M	YAK 20
7/8"	123804	P2B-SC-014	YAS 7/8	7/8"	123861	P2B-SCB-014	YAK 7/8
15/16"	123805	P2B-SC-015	YAS 15/16	15/16"	123862	P2B-SCB-015	YAK 15/16
1"	123806	P2B-SC-100	YAS 1	1"	123863	P2B-SCB-100	YAK 1
25mm	125852	P2B-SC-25M	YAS 25	25mm	125768	P2B-SCB-25M	YAK 25
1 1/8"	123878	P2B-SCU-102	YAS 1 1/8	1 1/8"	123864	P2B-SCB-102	YAK 1 1/8
1 3/16"	123879	P2B-SCU-103	YAS 1 3/16	1 3/16"	123865	P2B-SCB-103	YAK 1 3/16
1 1/4S"	123894	P2B-SCU-104S	YAS 1 1/4S	1 1/4S"	123171	P2B-SCB-104S	YAK 1 1/4S
30mm	125854	P2B-SCU-30M	YAS 30	30mm	125760	P2B-SCB-30M	YAK 30
1 1/4"	123810	P2B-SC-104	YAS 1 1/4	1 1/4"	123866	P2B-SCB-104	YAK 1 1/4
1 3/8"	123812	P2B-SC-106	YAS 1 3/8	1 3/8"	123867	P2B-SCB-106	YAK 1 3/8
1 7/16"	123813	P2B-SC-107	YAS 1 7/16	1 7/16"	123868	P2B-SCB-107	YAK 1 7/16
35mm	125855	P2B-SC-35M	YAS 35	35mm	124944	P2B-SCB-35M	YAK 35
1 1/2"	123814	P2B-SC-108	YAS 1 1/2	1 1/2"	123869	P2B-SCB-108	YAK 1 1/2
40mm	56855	P2B-SC-40M	YAS 40	40mm	125856	P2B-SCB-40M	YAK 40
1 1/2H"			YAS 1 1/2H	1 1/2H"			YAK 1 1/2H
1 5/8"	125169	P2B-SC-110L	YAS 1 5/8	1 5/8"	068760	P2B-SCB-110L	YAK 1 5/8
1 11/16"	123816	P2B-SC-111	YAS 1 11/16	1 11/16"	123870	P2B-SCB-111	YAK 1 11/16
1 3/4"	123817	P2B-SC-112	YAS 1 3/4	1 3/4"	123871	P2B-SCB-112	YAK 1 3/4
45mm	125857	P2B-SC-45M	YAS 45	45mm	051878	P2B-SCB-45M	YAK 45
1 15/16"	123818	P2B-SC-115	YAS 1 15/16	1 15/16"	123872	P2B-SCB-115	YAK 1 15/16
2S"	123819	P2B-SC-200	YAS 2S	2S"	123873	P2B-SCB-200	YAK 2S
50mm	125858	P2B-SC-50M	YAS 50	50mm	051879	P2B-SCB-50M	YAK 50
2"	126815	P2B-SCM-200	YAS 2	2"	057603	P2B-SCB-200L	YAK 2
2 3/16"	123820	P2B-SC-203	YAS 2 3/16	2 3/16"	123874	P2B-SCB-203	YAK 2 3/16
55mm	125859	P2B-SC-55M	YAS 55	55mm	124943	P2B-SCB-55M	YAK 55
2 1/4"	126817	P2B-SCM-204	YAS 2 1/4	2 1/4"	068361	P2B-SCB-204L	YAK 2 1/4
2 7/16"	123822	P2B-SC-207	YAS 2 7/16	2 7/16"	123875	P2B-SCB-207	YAK 2 7/16
60mm	125860	P2B-SC-60M	YAS 60	60mm	051880	P2B-SCB-60M	YAK 60
2 11/16"	123839	P2B-SC-211	YAS 2 11/16	2 11/16"			YAK 2 11/16
70mm	125861	P2B-SC-70M	YAS 70	70mm			YAK 70
2 15/16"	123728	P2B-SC-215	YAS 2 15/16	2 15/16"	123727	P2B-SCB-215	YAK 2 15/16
75mm	52792	P2B-SC-75M	YAS 75	75mm	-	P2B-SCB-75M	YAK 75
2 15/16H"	123823	P2B-SCU-215	YAS 2 15/16H				

NOTE: Timken has made every effort to ensure the accuracy of this interchange, however, Timken is not liable for any errors or omissions.

Bolded parts indicate popular bearing sizes.

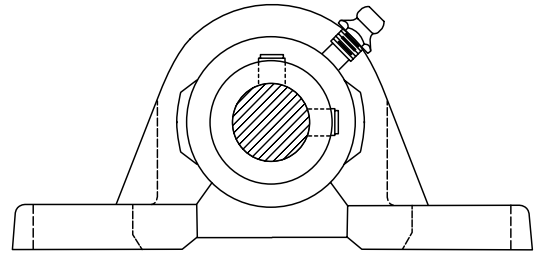
- = made to order only

NOTE: Most Y Series industrial bearing inserts can be equipped with Shaft Guarding Technology™ for shaft protection, add SGT to the part number when ordering.

Stronger. By Design.



FAFNIR® BALL BEARINGS PILLOW BLOCKS Replacement Bearings for Dodge



SET SCREW LOCKING STANDARD INSERT

Shaft Size	High Base to Center Height			Shaft Size	Low Base to Center Height		
	DODGE PART DESCRIPTION	DODGE	TIMKEN		DODGE PART DESCRIPTION	DODGE	TIMKEN
1/2"	125513	P2B-VSCU-008	SAS 1/2	1/2"	125500	P2B-VSC-008	SAK 1/2
5/8"	125514	P2B-VSCU-010	SAS 5/8	5/8"	125501	P2B-VSC-010	SAK 5/8
17mm	125685	P2B-VSCU-17M	SAS 17	17mm	-	P2B-VSC-17M	SAK 17
3/4"	123580	P2B-VSC-012	SAS 3/4	3/4"	123595	P2B-VSCB-012	SAK 3/4
20mm	125686	P2B-VSC-20M	SAS 20	20mm	-	P2B-VSCB-20M	SAK 20
7/8"	125502	P2B-VSC-014	SAS 7/8	7/8"	125508	P2B-VSCB-014	SAK 7/8
15/16"	125503	P2B-VSC-015	SAS 15/16	15/16"	125509	P2B-VSCB-015	SAK 15/16
1"	123581	P2B-VSC-100	SAS 1	1"	123596	P2B-VSCB-100	SAK 1
25mm	125687	P2B-VSC-25M	SAS 25	25mm	-	P2B-VSCB-25M	SAK 25
1 1/8"	125515	P2B-VSCU-102	SAS 1 1/8	1 1/8"	125510	P2B-VSCB-102	SAK 1 1/8
1 3/16"	123604	P2B-VSCU-103	SAS 1 3/16	1 3/16"	123597	P2B-VSCB-103	SAK 1 3/16
1 1/4S"	123606	P2B-VSCU-104S	SAS 1 1/4S	1 1/4S"	123605	P2B-VSCB-104S	SAK 1 1/4S
30mm	125688	P2B-VSCU-30M	SAS 30	30mm	-	P2B-VSCB-30M	SAK 30
1 1/4"	123583	P2B-VSC-104	SAS 1 1/4	1 1/4"	123598	P2B-VSCB-104	SAK 1 1/4
1 3/8"	125505	P2B-VSC-106	SAS 1 3/8	1 3/8"	125511	P2B-VSCB-106	SAK 1 3/8
1 7/16"	123584	P2B-VSC-107	SAS 1 7/16	1 7/16"	123599	P2B-VSCB-107	SAK 1 7/16
35mm	125689	P2B-VSC-35M	SAS 35	35mm	-	P2B-VSCB-35M	SAK 35
1 1/2"			SAS 1 1/2	1 1/2"	123600	P2B-VSCB-108	SAK 1 1/2
40mm	-	P2B-VSC-40M	SAS 40	40mm	125690	P2B-VSCB-40M	SAK 40
1 1/2H"	123585	P2B-VSC-108	SAS 1 1/2H	1 1/2H"			SAK 1 1/2H
1 5/8"			SAS 1 5/8	1 5/8"			SAK 1 5/8
1 11/16"	125506	P2B-VSC-111	SAS 1 11/16	1 11/16"	125512	P2B-VSCB-111	SAK 1 11/16
1 3/4"	124933	P2B-VSC-112	SAS 1 3/4	1 3/4"	125507	P2B-VSCB-112	SAK 1 3/4
45mm	125691	P2B-VSC-45M	SAS 45	45mm	-	P2B-VSCB-45M	SAK 45
1 15/16"	123586	P2B-VSC-115	SAS 1 15/16	1 15/16"	123601	P2B-VSCB-115	SAK 1 15/16
2S"	123587	P2B-VSC-200	SAS 2S	2S"	123602	P2B-VSCB-200	SAK 2S
50mm	125692	P2B-VSC-50M	SAS 50	50mm	-	P2B-VSCB-50M	SAK 50
2"	123593	P2B-VSC-200L	SAS 2	2"	123607	P2B-VSCB-200L	SAK 2
2 3/16"	123588	P2B-VSC-203	SAS 2 3/16	2 3/16"	123603	P2B-VSCB-203	SAK 2 3/16
55mm	125693	P2B-VSC-55M	SAS 55	55mm	-	P2B-VSCB-55M	SAK 55

NOTE: Timken has made every effort to ensure the accuracy of this interchange, however, Timken is not liable for any errors or omissions.

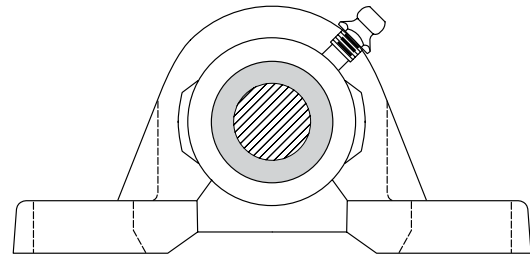
Bolded parts indicate popular bearing sizes.

- = made to order only

Stronger. By Design.



FAFNIR® BALL BEARINGS PILLOW BLOCKS Replacement Bearings for Dodge



ECCENTRIC LOCKING INDUSTRIAL INSERT

Shaft Size	High Base to Center Height			Shaft Size	Low Base to Center Height		
	DODGE PART DESCRIPTION	DODGE	TIMKEN		DODGE PART DESCRIPTION	DODGE	TIMKEN
1/2"	131341	P2B-SXRU-008	RAS 1/2	1/2"	131800	P2B-SXR-008	RAK 1/2
5/8"	131342	P2B-SXRU-010	RAS 5/8	5/8"	131801	P2B-SXR-010	RAK 5/8
11/16"			RAS 11/16	11/16"			RAK 11/16
17mm	125655	P2B-SXRU-17M	RAS 17	17mm	-	P2B-SXR-17M	RAK 17
3/4"	131802	P2B-SXR-012	RAS 3/4	3/4"	131830	P2B-SXRB-012	RAK 3/4
20mm	125656	P2B-SXR-20M	RAS 20	20mm	-	P2B-SXRB-20M	RAK 20
7/8"	131803	P2B-SXR-014	RAS 7/8	7/8"	131831	P2B-SXRB-014	RAK 7/8
15/16"	131804	P2B-SXR-015	RAS 15/16	15/16"	131832	P2B-SXRB-015	RAK 15/16
1"	131805	P2B-SXR-100	RAS 1	1"	131833	P2B-SXRB-100	RAK 1
25mm	125657	P2B-SXR-25M	RAS 25	25mm	-	P2B-SXRB-25M	RAK 25
1 1/16"	131895	P2B-SXRU-101	RAS 1 1/16	1 1/16"	131834	P2B-SXRB-101	RAK 1 1/16
1 1/8"	131896	P2B-SXRU-102	RAS 1 1/8	1 1/8"	131835	P2B-SXRB-102	RAK 1 1/8
1 3/16"	131897	P2B-SXRU-103	RAS 1 3/16	1 3/16"	131836	P2B-SXRB-103	RAK 1 3/16
1 1/4S"	-	P2B-SXRU-104S	RAS 1 1/4S	1 1/4S"	068743	P2B-SXRB-104S	RAK 1 1/4S
30mm	125658	P2B-SXRU-30M	RAS 30	30mm	-	P2B-SXRB-30M	RAK 30
1 1/4"	131809	P2B-SXR-104	RAS 1 1/4	1 1/4"	131837	P2B-SXRB-104	RAK 1 1/4
1 5/16"	131810	P2B-SXR-105	RAS 1 5/16	1 5/16"	131838	P2B-SXRB-105	RAK 1 5/16
1 3/8"	131811	P2B-SXR-106	RAS 1 3/8	1 3/8"	131839	P2B-SXRB-106	RAK 1 3/8
1 7/16"	131812	P2B-SXR-107	RAS 1 7/16	1 7/16"	131840	P2B-SXRB-107	RAK 1 7/16
35mm	125659	P2B-SXR-35M	RAS 35	35mm	-	P2B-SXRB-35M	RAK 35
1 1/2"	131813	P2B-SXR-108	RAS 1 1/2	1 1/2"	131841	P2B-SXRB-108	RAK 1 1/2
1 9/16"			RAS 1 9/16	1 9/16"			RAK 1 9/16
40mm	-	P2B-SXR-40M	RAS 40	40mm	125660	P2B-SXRB-40M	RAK 40
1 5/8"	13181	P2B-SXR-110	RAS 1 5/8	1 5/8"	131842	P2B-SXRB-110	RAK 1 5/8
1 11/16"	131815	P2B-SXR-111	RAS 1 11/16	1 11/16"	131843	P2B-SXRB-111	RAK 1 11/16
1 3/4"	131816	P2B-SXR-112	RAS 1 3/4	1 3/4"	131844	P2B-SXRB-112	RAK 1 3/4
45mm	125661	P2B-SXR-45M	RAS 45	45mm	-	P2B-SXRB-45M	RAK 45
1 7/8"			RAS 1 7/8	1 7/8"			RAK 1 7/8
1 15/16"	131817	P2B-SXR-115	RAS 1 15/16	1 15/16"	131845	P2B-SXRB-115	RAK 1 15/16
50mm	125662	P2B-SXR-50M	RAS 50	50mm	-	P2B-SXRB-50M	RAK 50
2"	131339	P2B-SXR-200L	RAS 2	2"	131340	P2B-SXRB-200L	RAK 2
2 1/8"			RAS 2 1/8	2 1/8"			RAK 2 1/8
2 3/16"	131819	P2B-SXR-203	RAS 2 3/16	2 3/16"	131847	P2B-SXRB-203	RAK 2 3/16
55mm	125663	P2B-SXR-55M	RAS 55	55mm	-	P2B-SXRB-55M	RAK 55
2 1/4"	131820	P2B-SXR-204	RAS 2 1/4	2 1/4"	131848	P2B-SXRB-204	RAK 2 1/4
2 3/8"			RAS 2 3/8	2 3/8"			RAK 2 3/8
2 7/16"	131821	P2B-SXR-207	RAS 2 7/16	2 7/16"	131849	P2B-SXRB-207	RAK 2 7/16
60mm	125664	P2B-SXR-60M	RAS 60	60mm	-	P2B-SXRB-60M	RAK 60
2 11/16"				2 11/16"			RAK 2 11/16
70mm				70mm			RAK 70
2 15/16"	131433	P2B-SXRU-215	RAS 2 15/16	2 15/16"	131434	P2B-SXRB-215	RAK 2 15/16
75mm	125665	P2B-SXRU-75M	RAS 75	75mm	-	P2B-SXRB-75M	RAK 75

NOTE: Timken has made every effort to ensure the accuracy of this interchange, however, Timken is not liable for any errors or omissions.

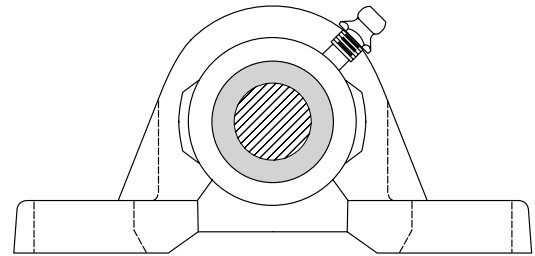
Bolded parts indicate popular bearing sizes.

- = made to order only

Stronger. By Design.



FAFNIR® BALL BEARINGS PILLOW BLOCKS Replacement Bearings for Dodge



ECCENTRIC LOCKING STANDARD INSERT

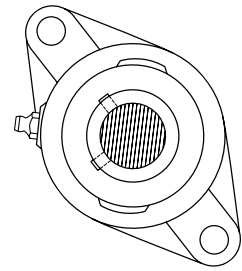
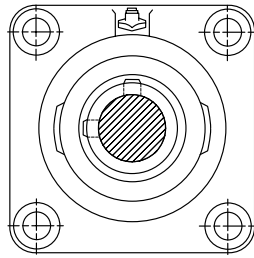
Shaft Size	High Base to Center Height			Shaft Size	Low Base to Center Height		
	DODGE PART DESCRIPTION	DODGE	TIMKEN		DODGE PART DESCRIPTION	DODGE	TIMKEN
1/2"	130324	P2B-SXVU-008	VAS 1/2	1/2"	130310	P2B-SXV-008	VAK 1/2
5/8"	130325	P2B-SXVU-010	VAS 5/8	5/8"	130311	P2B-SXV-010	VAK 5/8
17mm	125711	P2B-SXVU-17M	VAS 17	17mm	-	P2B-SXV-17M	VAK 17
3/4"	131970	P2B-SXV-012	VAS 3/4	3/4"	131983	P2B-SXVB-012	VAK 3/4
20mm	125712	P2B-SXV-20M	VAS 20	20mm	-	P2B-SXVB-20M	VAK 20
7/8"	131971	P2B-SXV-014	VAS 7/8	7/8"	131984	P2B-SXVB-014	VAK 7/8
15/16"	131972	P2B-SXV-015	VAS 15/16	15/16"	131985	P2B-SXVB-015	VAK 15/16
1"	131973	P2B-SXV-100	VAS 1	1"	131986	P2B-SXVB-100	VAK 1
25mm	125713	P2B-SXV-25M	VAS 25	25mm	-	P2B-SXVB-25M	VAK 25
1 1/8"	131083	P2B-SXVU-102	VAS 1 1/8	1 1/8"	131988	P2B-SXVB-102	VAK 1 1/8
1 3/16"	131084	P2B-SXVU-103	VAS 1 3/16	1 3/16"	131989	P2B-SXVB-103	VAK 1 3/16
1 1/4S"	131085	P2B-SXVU-104S	VAS 1 1/4S	1 1/4S"	131990	P2B-SXVB-104S	VAK 1 1/4S
30mm	125714	P2B-SXVU-30M	VAS 30	30mm	056830	P2B-SXVB-30M	VAK 30
1 1/4"	131978	P2B-SXV-104	VAS 1 1/4	1 1/4"	131991	P2B-SXVB-104	VAK 1 1/4
1 3/8"	131980	P2B-SXV-106	VAS 1 3/8	1 3/8"	131993	P2B-SXVB-106	VAK 1 3/8
1 7/16"	131981	P2B-SXV-107	VAS 1 7/16	1 7/16"	131994	P2B-SXVB-107	VAK 1 7/16
35mm	125715	P2B-SXV-35M	VAS 35	35mm	068864	P2B-SXVB-35M	VAK 35
1 1/2"	131982	P2B-SXV-108	VAS 1 1/2	1 1/2"	131995	P2B-SXVB-108	VAK 1 1/2
40mm	-	P2B-SXV-40M	VAS 40	40mm	125716	P2B-SXVB-40M	VAK 40
1 5/8"			VAS 1 5/8	1 5/8"			VAK 1 5/8
1 11/16"	130312	P2B-SXV-111	VAS 1 11/16	1 11/16"	130318	P2B-SXVB-111	VAK 1 11/16
1 3/4"	130313	P2B-SXV-112	VAS 1 3/4	1 3/4"	130319	P2B-SXVB-112	VAK 1 3/4
45mm	125717	P2B-SXV-45M	VAS 45	45mm	-	P2B-SXVB-45M	VAK 45
1 7/8"			VAS 1 7/8	1 7/8"			VAK 1 7/8
1 15/16"	130314	P2B-SXV-115	VAS 1 15/16	1 15/16"	130320	P2B-SXVB-115	VAK 1 15/16
2S"	130315	P2B-SXV-200	VAS 2	2S"	130321	P2B-SXVB-200	VAK 2S
50mm	125718	P2B-SXV-50M	VAS 50	50mm	-	P2B-SXVB-50M	VAK 50
2"	130316	P2B-SXV-200L	VAS 2	2"	130322	P2B-SXVB-200L	VAK 2
2 3/16"	130317	P2B-SXV-203	VAS 2 3/16	2 3/16"	130323	P2B-SXVB-203	VAK 2 3/16
55mm	125719	P2B-SXV-55M	VAS 55	55mm	-	P2B-SXVB-55M	VAK 55

NOTE: Timken has made every effort to ensure the accuracy of this interchange, however, Timken is not liable for any errors or omissions.

Bolded parts indicate popular bearing sizes.

- = made to order only

Stronger. By Design.



SET SCREW LOCKING INDUSTRIAL INSERT

Shaft Size	4-Bolt Flanges			Shaft Size	2-Bolt Flanges		
	DODGE PART DESCRIPTION	DODGE	TIMKEN		DODGE PART DESCRIPTION	DODGE	TIMKEN
1/2"	124048	F4B-SC-008	YCJ 1/2	1/2"	124198	F2B-SC-008	YCJT 1/2
5/8"	124049	F4B-SC-010	YCJ 5/8	5/8"	124199	F2B-SC-010	YCJT 5/8
17mm	125885	F4B-SC-17M	YCJ 17	17mm	125875	F2B-SC-17M	YCJT 17
3/4"	124100	F4B-SC-012	YCJ 3/4	3/4"	124170	F2B-SC-012	YCJT 3/4
20mm	125886	F4B-SC-20M	YCJ 20	20mm	125876	F2B-SC-20M	YCJT 20
7/8"	124101	F4B-SC-014	YCJ 7/8	7/8"	124171	F2B-SC-014	YCJT 7/8
15/16"	124102	F4B-SC-015	YCJ 15/16	15/16"	124172	F2B-SC-015	YCJT 15/16
1"	124103	F4B-SC-100	YCJ 1	1"	124173	F2B-SC-100	YCJT 1
25mm	125887	F4B-SC-25M	YCJ 25	25mm	125877	F2B-SC-25M	YCJT 25
1 1/16"	124218	F4B-SC-101	YCJ 1 1/16	1 1/16"	124410	F2B-SC-101	YCJT 1 1/16
1 1/8"	124204	F4B-SC-102	YCJ 1 1/8	1 1/8"	124274	F2B-SC-102	YCJT 1 1/8
1 3/16"	124205	F4B-SC-103	YCJ 1 3/16	1 3/16"	124275	F2B-SC-103	YCJT 1 3/16
1 1/4S"	123173	F4B-SC-104S	YCJ 1 1/4S	1 1/4S"	123172	F2B-SC-104S	YCJT 1 1/4S
30mm	125888	F4B-SC-30M	YCJ 30	30mm	125878	F2B-SC-30M	YCJT 30
1 1/4"	124206	F4B-SC-104	YCJ 1 1/4	1 1/4"	124276	F2B-SC-104	YCJT 1 1/4
1 5/16"	124219	F4B-SC-105	YCJ 1 5/16	1 5/16"	124411	F2B-SC-105	YCJT 1 5/16
1 3/8"	124207	F4B-SC-106	YCJ 1 3/8	1 3/8"	124277	F2B-SC-106	YCJT 1 3/8
1 7/16"	124208	F4B-SC-107	YCJ 1 7/16	1 7/16"	124278	F2B-SC-107	YCJT 1 7/16
35mm	125889	F4B-SC-35M	YCJ 35	35mm	125879	F2B-SC-35M	YCJT 35
1 1/2"	124209	F4B-SC-108	YCJ 1 1/2	1 1/2"	124268	F2B-SC-108	YCJT 1 1/2
40mm	125890	F4B-SC-40M	YCJ 40	40mm	125880	F2B-SC-40M	YCJT 40
1 5/8"	125170	F4B-SC-110L	YCJ 1 5/8	1 5/8"	125171	F2B-SC-110L	YCJT 1 5/8
1 11/16"	124211	F4B-SC-111	YCJ 1 11/16	1 11/16"	124279	F2B-SC-111	YCJT 1 11/16
1 3/4"	124212	F4B-SC-112	YCJ 1 3/4	1 3/4"	124413	F2B-SC-112	YCJT 1 3/4
45mm	125891	F4B-SC-45M	YCJ 45	45mm	125881	F2B-SC-45M	YCJT 45
1 15/16"	124213	F4B-SC-115	YCJ 1 15/16	1 15/16"	124269	F2B-SC-115	YCJT 1 15/16
2S"	124214	F4B-SC-200	YCJ 2S	2S"	124270	F2B-SC-200	YCJT 2S
50mm	125892	F4B-SC-50M	YCJ 50	50mm	125882	F2B-SC-50M	YCJT 50
2"	126192	F4B-SCM-200	YCJ 2	2"	126293	F2B-SCM-200	YCJT 2
2 3/16"	124215	F4B-SC-203	YCJ 2 3/16	2 3/16"	124034	F2B-SC-203	YCJT 2 3/16
55mm	125893	F4B-SC-55M	YCJ 55	55mm	124942	F2B-SC-55M	YCJT 55
2 1/4"	126283	F4B-SCM-204					
2 7/16"	124217	F4B-SC-207	YCJ 2 7/16				
60mm	125894	F4B-SC-60M	YCJ 60				
2 11/16"	124261	F4B-SC-211	YCJ 2 11/16				
70mm	125895	F4B-SC-70M	YCJ 70				
2 15/16"	124220	F4B-SC-215	YCJ 2 15/16				
75mm	125896	F4B-SC-75M	YCJ 75				

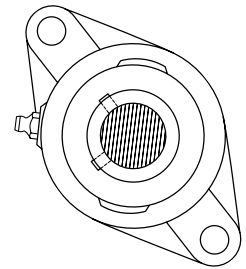
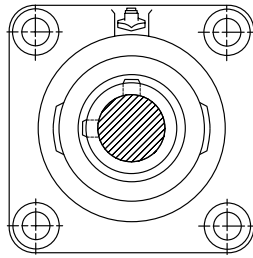
NOTE: Timken has made every effort to ensure the accuracy of this interchange, however, Timken is not liable for any errors or omissions.

Bolded parts indicate popular bearing sizes.

NOTE: Most Y Series industrial bearing inserts can be equipped with Shaft Guarding Technology™ for shaft protection, add SGT to the part number when ordering.



FAFNIR® BALL BEARINGS 4-BOLT & 2-BOLT FLANGES Replacement Bearings for Dodge



SET SCREW LOCKING STANDARD INSERT

Shaft Size	4-Bolt Flanges			Shaft Size	2-Bolt Flanges		
	DODGE PART DESCRIPTION	DODGE	TIMKEN		DODGE PART DESCRIPTION	DODGE	TIMKEN
1/2"	125524	F4B-VSC-008	SCJ 1/2	1/2"	125516	F2B-VSC-008	SCJT 1/2
5/8"	125525	F4B-VSC-010	SCJ 5/8	5/8"	125517	F2B-VSC-010	SCJT 5/8
17mm	125694	F4B-VSC-17M	SCJ 17	17mm	125703	F2B-VSC-17M	SCJT 17
3/4"	123625	F4B-VSC-012	SCJ 3/4	3/4"	123610	F2B-VSC-012	SCJT 3/4
20mm	125695	F4B-VSC-20M	SCJ 20	20mm	125704	F2B-VSC-20M	SCJT 20
7/8"	125526	F4B-VSC-014	SCJ 7/8	7/8"	125518	F2B-VSC-014	SCJT 7/8
15/16"	125527	F4B-VSC-015	SCJ 15/16	15/16"	125519	F2B-VSC-015	SCJT 15/16
1"	123626	F4B-VSC-100	SCJ 1	1"	123611	F2B-VSC-100	SCJT 1
25mm	125696	F4B-VSC-25M	SCJ 25	25mm	125705	F2B-VSC-25M	SCJT 25
1 1/8"	125528	F4B-VSC-102	SCJ 1 1/8	1 1/8"	125520	F2B-VSC-102	SCJT 1 1/8
1 3/16"	123627	F4B-VSC-103	SCJ 1 3/16	1 3/16"	123612	F2B-VSC-103	SCJT 1 3/16
1 1/4S"	123634	F4B-VSC-104S	SCJ 1 1/4S	1 1/4S"	123618	F2B-VSC-104S	SCJT 1 1/4S
30mm	125697	F4B-VSC-30M	SCJ 30	30mm	125752	F2B-VSC-30M	SCJT 30
1 1/4"	123628	F4B-VSC-104	SCJ 1 1/4	1 1/4"	123613	F2B-VSC-104	SCJT 1 1/4
1 3/8"	125529	F4B-VSC-106	SCJ 1 3/8	1 3/8"	125521	F2B-VSC-106	SCJT 1 3/8
1 7/16"	123629	F4B-VSC-107	SCJ 1 7/16	1 7/16"	123614	F2B-VSC-107	SCJT 1 7/16
35mm	125698	F4B-VSC-35M	SCJ 35	35mm	125706	F2B-VSC-35M	SCJT 35
1 1/2"	123630	F4B-VSC-108	SCJ 1 1/2	1 1/2"	123615	F2B-VSC-108	SCJT 1 1/2
40mm	125699	F4B-VSC-40M	SCJ 40	40mm	125707	F2B-VSC-40M	SCJT 40
1 5/8"			SCJ 1 5/8	1 5/8"			SCJT 1 5/8
1 11/16"	125530	F4B-VSC-111	SCJ 1 11/16	1 11/16"	125522	F2B-VSC-111	SCJT 1 11/16
1 3/4"	125531	F4B-VSC-112	SCJ 1 3/4	1 3/4"	125523	F2B-VSC-112	SCJT 1 3/4
45mm	125700	F4B-VSC-45M	SCJ 45	45mm	125708	F2B-VSC-45M	SCJT 45
1 15/16"	123631	F4B-VSC-115	SCJ 1 15/16	1 15/16"	123616	F2B-VSC-115	SCJT 1 15/16
2S"	123632	F4B-VSC-200	SCJ 2S	2S"	123617	F2B-VSC-200	SCJT 2S
50mm	125701	F4B-VSC-50M	SCJ 50	50mm	125709	F2B-VSC-50M	SCJT 50
2"	123652	F4B-VSC-200L	SCJ 2	2"	123694	F2B-VSC-200L	SCJT 2
2 3/16"	123633	F4B-VSC-203	SCJ 2 3/16	2 3/16"	123619	F2B-VSC-203	SCJT 2 3/16
55mm	125702	F4B-VSC-55M	SCJ 55	55mm	125710	F2B-VSC-55M	SCJT 55

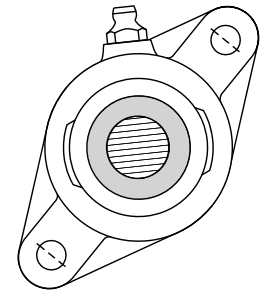
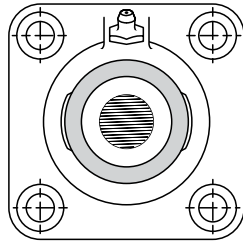
NOTE: Timken has made every effort to ensure the accuracy of this interchange, however, Timken is not liable for any errors or omissions.

Bolded parts indicate popular bearing sizes.

Stronger. By Design.



FAFNIR® BALL BEARINGS 4-BOLT & 2-BOLT FLANGES Replacement Bearings for Dodge



ECCENTRIC LOCKING INDUSTRIAL INSERT

Shaft Size	4-Bolt Flanges			Shaft Size	2-Bolt Flanges		
	DODGE PART DESCRIPTION	DODGE	TIMKEN		DODGE PART DESCRIPTION	DODGE	TIMKEN
1/2"	131100	F4B-SXR-008	RCJ 1/2	1/2"	131050	F2B-SXR-008	RCJT 1/2
5/8"	131102	F4B-SXR-010	RCJ 5/8	5/8"	131052	F2B-SXR-010	RCJT 5/8
1 1/16"			RCJ 1 1/16	1 1/16"			RCJT 1 1/16
17mm	125666	F4B-SXR-17M	RCJ 17	17mm	125677	F2B-SXR-17M	RCJT 17
3/4"	131104	F4B-SXR-012	RCJ 3/4	3/4"	131054	F2B-SXR-012	RCJT 3/4
20mm	125667	F4B-SXR-20M	RCJ 20	20mm	125678	F2B-SXR-20M	RCJT 20
7/8"	131106	F4B-SXR-014	RCJ 7/8	7/8"	131056	F2B-SXR-014	RCJT 7/8
15/16"	131107	F4B-SXR-015	RCJ 15/16	15/16"	131057	F2B-SXR-015	RCJT 15/16
1"	131108	F4B-SXR-100	RCJ 1	1"	131058	F2B-SXR-100	RCJT 1
25mm	125668	F4B-SXR-25M	RCJ 25	25mm	125679	F2B-SXR-25M	RCJT 25
1 1/16"	131109	F4B-SXR-101	RCJ 1 1/16	1 1/16"	131059	F2B-SXR-101	RCJT 1 1/16
1 1/8"	131110	F4B-SXR-102	RCJ 1 1/8	1 1/8"	131060	F2B-SXR-102	RCJT 1 1/8
1 3/16"	131111	F4B-SXR-103	RCJ 1 3/16	1 3/16"	131061	F2B-SXR-103	RCJT 1 3/16
1 1/4S"	064929	F4B-SXR-104S	RCJ 1 1/4S	1 1/4S"	049879	F2B-SXR-104S	RCJT 1 1/4S
30mm	125669	F4B-SXR-30M	RCJ 30	30mm	125680	F2B-SXR-30M	RCJT 30
1 1/4"	131113	F4B-SXR-104	RCJ 1 1/4	1 1/4"	131063	F2B-SXR-104	RCJT 1 1/4
1 5/16"	131114	F4B-SXR-105	RCJ 1 5/16	1 5/16"	131064	F2B-SXR-105	RCJT 1 5/16
1 3/8"	131115	F4B-SXR-106	RCJ 1 3/8	1 3/8"	131065	F2B-SXR-106	RCJT 1 3/8
1 7/16"	131116	F4B-SXR-107	RCJ 1 7/16	1 7/16"	131066	F2B-SXR-107	RCJT 1 7/16
35mm	125670	F4B-SXR-35M	RCJ 35	35mm	125681	F2B-SXR-35M	RCJT 35
1 1/2"	131117	F4B-SXR-108	RCJ 1 1/2	1 1/2"	131067	F2B-SXR-108	RCJT 1 1/2
1 9/16"			RCJ 1 9/16	1 9/16"			RCJT 1 9/16
40mm	125671	F4B-SXR-40M	RCJ 40	40mm	125682	F2B-SXR-40M	RCJT 40
1 5/8"	131120	F4B-SXR-110	RCJ 1 5/8	1 5/8"	131070	F2B-SXR-110	RCJT 1 5/8
1 11/16"	131121	F4B-SXR-111	RCJ 1 11/16	1 11/16"	131071	F2B-SXR-111	RCJT 1 11/16
1 3/4"	131122	F4B-SXR-112	RCJ 1 3/4	1 3/4"	131072	F2B-SXR-112	RCJT 1 3/4
45mm	125672	F4B-SXR-45M	RCJ 45	45mm	125683	F2B-SXR-45M	RCJT 45
1 7/8"			RCJ 1 7/8	1 7/8"			RCJT 1 7/8
1 15/16"	131125	F4B-SXR-115	RCJ 1 15/16	1 15/16"	131075	F2B-SXR-115	RCJT 1 15/16
50mm	125673	F4B-SXR-50M	RCJ 50	50mm	125684	F2B-SXR-50M	RCJT 50
2"	131343	F4B-SXR-200L	RCJ 2	2"	-	F2B-SXR-200L	RCJT 2
2 1/8"			RCJ 2 1/8	2 1/8"			RCJT 2 1/8
2 3/16"	131130	F4B-SXR-203	RCJ 2 3/16	2 3/16"	131074	F2B-SXR-203	RCJT 2 3/16
55mm	125674	F4B-SXR-55M	RCJ 55	55mm	056862	F2B-SXR-55M	RCJT 55
2 1/4"	131132	F4B-SXR-204	RCJ 2 1/4				
2 3/8"			RCJ 2 3/8				
2 7/16"	131135	F4B-SXR-207	RCJ 2 7/16				
60mm	125675	F4B-SXR-60M	RCJ 60				
2 11/16"			RCJ 2 11/16				
70mm			RCJ 70				
2 15/16"	131137	F4B-SXR-215	RCJ 2 15/16				
75mm	125676	F4B-SXR-75M	RCJ 75				

NOTE: Timken has made every effort to ensure the accuracy of this interchange, however, Timken is not liable for any errors or omissions.

Bolded parts indicate popular bearing sizes.

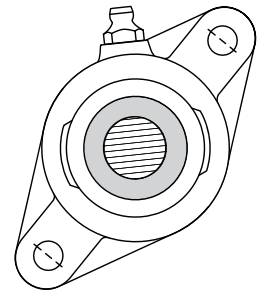
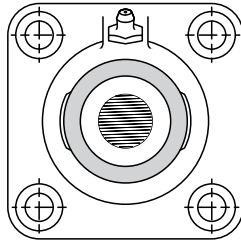
- = made to order only

Stronger. By Design.



FAFNIR® BALL BEARINGS 4-BOLT & 2-BOLT FLANGES

Replacement Bearings for Dodge



ECCENTRIC LOCKING STANDARD INSERT

Shaft Size	4-Bolt Flanges			Shaft Size	2-Bolt Flanges		
	DODGE PART DESCRIPTION	DODGE	TIMKEN		DODGE PART DESCRIPTION	DODGE	TIMKEN
1/2"	130332	F4B-SXV-008	VCJ 1/2	1/2"	130326	F2B-SXV-008	VCJT 1/2
5/8"	130333	F4B-SXV-010	VCJ 5/8	5/8"	130327	F2B-SXV-010	VCJT 5/8
17mm	125720	F4B-SXV-17M	VCJ 17	17mm	125729	F2B-SXV-17M	VCJT 17
3/4"	131377	F4B-SXV-012	VCJ 3/4	3/4"	131737	F2B-SXV-012	VCJT 3/4
20mm	125721	F4B-SXV-20M	VCJ 20	20mm	125730	F2B-SXV-20M	VCJT 20
7/8"	131378	F4B-SXV-014	VCJ 7/8	7/8"	131738	F2B-SXV-014	VCJT 7/8
15/16"	131379	F4B-SXV-015	VCJ 15/16	15/16"	131739	F2B-SXV-015	VCJT 15/16
1"	131380	F4B-SXV-100	VCJ 1	1"	131740	F2B-SXV-100	VCJT 1
25mm	125722	F4B-SXV-25M	VCJ 25	25mm	125731	F2B-SXV-25M	VCJT 25
1 1/8"	131382	F4B-SXV-102	VCJ 1 1/8	1 1/8"	131742	F2B-SXV-102	VCJT 1 1/8
1 3/16"	131383	F4B-SXV-103	VCJ 1 3/16	1 3/16"	131743	F2B-SXV-103	VCJT 1 3/16
1 1/4S"	131384	F4B-SXV-104S	VCJ 1 1/4S	1 1/4S"	131744	F2B-SXV-104S	VCJT 1 1/4S
30mm	125723	F4B-SXV-30M	VCJ 30	30mm	125732	F2B-SXV-30M	VCJT 30
1 1/4"	131385	F4B-SXV-104	VCJ 1 1/4	1 1/4"	131745	F2B-SXV-104	VCJT 1 1/4
1 3/8"	131387	F4B-SXV-106	VCJ 1 3/8	1 3/8"	131747	F2B-SXV-106	VCJT 1 3/8
1 7/16"	131388	F4B-SXV-107	VCJ 1 7/16	1 7/16"	131748	F2B-SXV-107	VCJT 1 7/16
35mm	125724	F4B-SXV-35M	VCJ 35	35mm	125733	F2B-SXV-35M	VCJT 35
1 1/2"	131389	F4B-SXV-108	VCJ 1 1/2	1 1/2"	131749	F2B-SXV-108	VCJT 1 1/2
40mm	125725	F4B-SXV-40M	VCJ 40	40mm	125734	F2B-SXV-40M	VCJT 40
1 5/8"			VCJ 1 5/8	1 5/8"			VCJT 1 5/8
1 11/16"	130334	F4B-SXV-111	VCJ 1 11/16	1 11/16"	130328	F2B-SXV-111	VCJT 1 11/16
1 3/4"	130335	F4B-SXV-112	VCJ 1 3/4	1 3/4"	130329	F2B-SXV-112	VCJT 1 3/4
45mm	125726	F4B-SXV-45M	VCJ 45	45mm	125735	F2B-SXV-45M	VCJT 45
1 7/8"			VCJ 1 7/8	1 7/8"			VCJT 1 7/8
1 15/16"	130336	F4B-SXV-115	VCJ 1 15/16	1 15/16"	130330	F2B-SXV-115	VCJT 1 15/16
2S"	130337	F4B-SXV-200	VCJ 2S	2S"	130331	F2B-SXV-200	VCJT 2S
50mm	125727	F4B-SXV-50M	VCJ 50	50mm	125736	F2B-SXV-50M	VCJT 50
2"	130338	F4B-SXV-200L	VCJ 2	2"	130352	F2B-SXV-200L	VCJT 2
2 3/16"	130339	F4B-SXV-203	VCJ 2 3/16	2 3/16"	130353	F2B-SXV-203	VCJT 2 3/16
55mm	125728	F4B-SXV-55M	VCJ 55	55mm	125737	F2B-SXV-55M	VCJT 55

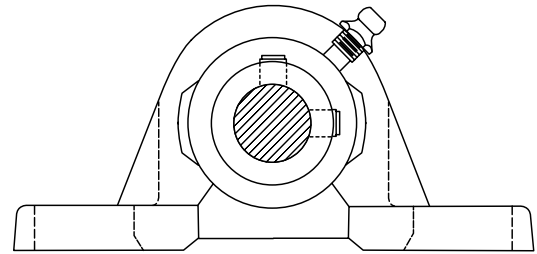
NOTE: Timken has made every effort to ensure the accuracy of this interchange, however, Timken is not liable for any errors or omissions.

Bolded parts indicate popular bearing sizes.

Stronger. By Design.



FAFNIR® BALL BEARINGS PILLOW BLOCKS Replacement Bearings for Sealmaster



PILLOW BLOCKS WITH SET SCREW LOCKING

INDUSTRIAL INSERT						STANDARD INSERT				
Shaft Size	High Base to Center Height		Low Base to Center Height			Shaft Size	High Base to Center Height		Low Base to Center Height	
	SEALMASTER	TIMKEN	SEALMASTER	TIMKEN	TIMKEN		SEALMASTER	TIMKEN	SEALMASTER	TIMKEN
1/2"	NP-8	NP-8C	YAS 1/2	NPL-8	NPL-8C	YAK 1/2	1/2"	SAS 1/2		SAK 1/2
5/8"	NP-10	NP-10C	YAS 5/8	NPL-10	NPL-10C	YAK 5/8	5/8"	SAS 5/8		SAK 5/8
17mm			YAS 17			YAK 17	17mm	SAS 17		SAK 17
3/4"	NP-12	NP-12C	YAS 3/4	NPL-12	NPL-12C	YAK 3/4	3/4"	SAS 3/4		SAK 3/4
20mm	NP-204	NP-204C	YAS 20	NPL-204	NPL-204C	YAK 20	20mm	SAS 20		SAK 20
7/8"	NP-14	NP-14C	YAS 7/8	NPL-14	NPL-14C	YAK 7/8	7/8"	SAS 7/8		SAK 7/8
15/16"	NP-15	NP-15C	YAS 15/16	NPL-15	NPL-15C	YAK 15/16	15/16"	SAS 15/16		SAK 15/16
1"	NP-16	NP-16C	YAS 1	NPL-16	NPL-16C	YAK 1	1"	SAS 1		SAK 1
25mm	NP-205	NP-205C	YAS 25	NPL-205	NPL-205C	YAK 25	25mm	SAS 25		SAK 25
1 1/8"	NP-18	NP-18C	YAS 1 1/8	NPL-18	NPL-18C	YAK 1 1/8	1 1/8"	SAS 1 1/8		SAK 1 1/8
1 3/16"	NP-19	NP-19C	YAS 1 3/16	NPL-19	NPL-19C	YAK 1 3/16	1 3/16"	SAS 1 3/16		SAK 1 3/16
1 1/4"	NP-20R	NP-20RC	YAS 1 1/4S	NPL-20R	NPL-20RC	YAK 1 1/4S	1 1/4"	SAS 1 1/4S		SAK 1 1/4S
30mm	NP-206	NP-206C	YAS 30	NPL-206	NPL-206C	YAK 30	30mm	SAS 30		SAK 30
1 1/4"	NP-20	NP-20C	YAS 1 1/4	NPL-20	NPL-20C	YAK 1 1/4	1 1/4"	SAS 1 1/4		SAK 1 1/4
1 3/8"	NP-22	NP-22C	YAS 1 3/8	NPL-22	NPL-22C	YAK 1 3/8	1 3/8"	SAS 1 3/8		SAK 1 3/8
1 7/16"	NP-23	NP-23C	YAS 1 7/16	NPL-23	NPL-23C	YAK 1 7/16	1 7/16"	SAS 1 7/16		SAK 1 7/16
35mm	NP-207	NP-207C	YAS 35	NPL-207	NPL-207C	YAK 35	35mm	SAS 35		SAK 35
1 1/2"	NP-24	NP-24C	YAS 1 1/2	NPL-24	NPL-24C	YAK 1 1/2	1 1/2"	SAS 1 1/2		SAK 1 1/2
40mm	NP-208	NP-208C	YAS 40	NPL-208	NPL-208C	YAK 40	40mm	SAS 40		SAK 40
1 1/2H"			YAS 1 1/2H			YAK 1 1/2H	1 1/2H"	SAS 1 1/2H		SAK 1 1/2H
1 5/8"	NP-26	NP-26C	YAS 1 5/8	NPL-26	NPL-26C	YAK 1 5/8	1 5/8"	SAS 1 5/8		SAK 1 5/8
1 11/16"	NP-27	NP-27C	YAS 1 11/16	NPL-27	NPL-27C	YAK 1 11/16	1 11/16"	SAS 1 11/16		SAK 1 11/16
1 3/4"	NP-28	NP-28C	YAS 1 3/4	NPL-28	NPL-28C	YAK 1 3/4	1 3/4"	SAS 1 3/4		SAK 1 3/4
45mm	NP-209	NP-209C	YAS 45	NPL-209	NPL-209C	YAK 45	45mm	SAS 45		SAK 45
1 15/16"	NP-31	NP-31C	YAS 1 15/16	NPL-31	NPL-31C	YAK 1 15/16	1 15/16"	SAS 1 15/16		SAK 1 15/16
2S"	NP-32R	NP-32RC	YAS 2S	NPL-32R	NPL-32RC	YAK 2S	2S"	SAS 2S		SAK 2S
50mm	NP-210	NP-210C	YAS 50	NPL-210	NPL-210C	YAK 50	50mm	SAS 50		SAK 50
2"	NP-32	NP-32C	YAS 2	NPL-32	NPL-32C	YAK 2	2"	SAS 2		SAK 2
2 3/16"	NP-35	NP-35C	YAS 2 3/16	NPL-35	NPL-35C	YAK 2 3/16	2 3/16"	SAS 2 3/16		SAK 2 3/16
55mm	NP-211	NP-211C	YAS 55	NPL-211	NPL-211C	YAK 55	55mm	SAS 55		SAK 55
2 1/4"	NP-36	NP-36C	YAS 2 1/4	NPL-36	NPL-36C	YAK 2 1/4				
2 7/16"	NP-39	NP-39C	YAS 2 7/16	NPL-39	NPL-39C	YAK 2 7/16				
60mm	NP-212	NP-212C	YAS 60	NPL-212	NPL-212C	YAK 60				
2 11/16"			YAS 2 11/16	NPL-43	NPL-43C	YAK 2 11/16				
70mm			YAS 70			YAK 70				
2 15/16"	NP-47	NP-47C	YAS 2 15/16			YAK 2 15/16				
75mm	NP-215	NP-215C	YAS 75			YAK 75				
2 15/16H"			YAS 2 15/16H							

NOTE: Timken has made every effort to ensure the accuracy of this interchange, however, Timken is not liable for any errors or omissions.

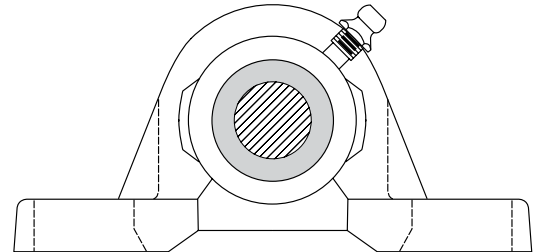
Bolded parts indicate popular bearing sizes.

NOTE: Most Y Series industrial bearing inserts can be equipped with Shaft Guarding Technology™ for shaft protection, add SGT to the part number when ordering.

Stronger. By Design.



FAFNIR® BALL BEARINGS PILLOW BLOCKS Replacement Bearings for Sealmaster



PILLOW BLOCKS WITH ECCENTRIC LOCKING

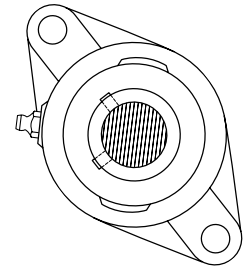
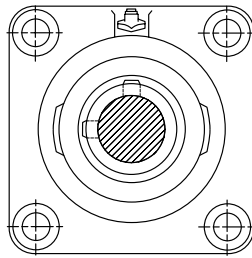
INDUSTRIAL INSERT					STANDARD INSERT				
Shaft Size	High Base to Center Height		Low Base to Center Height		Shaft Size	High Base to Center Height		Low Base to Center Height	
	SEALMASTER	TIMKEN	SEALMASTER	TIMKEN		SEALMASTER	TIMKEN	SEALMASTER	TIMKEN
1/2"		RAS 1/2		RAK 1/2	1/2"		VAS 1/2		VAK 1/2
5/8"		RAS 5/8		RAK 5/8	5/8"		VAS 5/8		VAK 5/8
11/16"		RAS 11/16		RAK 11/16					
17mm		RAS 17		RAK 17	17mm		VAS 17		VAK 17
3/4"		RAS 3/4		RAK 3/4	3/4"		VAS 3/4		VAK 3/4
20mm		RAS 20		RAK 20	20mm		VAS 25		VAK 20
7/8"		RAS 7/8		RAK 7/8	7/8"		VAS 7/8		VAK 7/8
15/16"		RAS 15/16		RAK 15/16	15/16"		VAS 15/16		VAK 15/16
1"		RAS 1		RAK 1	1"		VAS 1		VAK 1
25mm		RAS 25		RAK 25	25mm		VAS 25		VAK 25
1 1/16"		RAS 1 1/16		RAK 1 1/16					
1 1/8"		RAS 1 1/8		RAK 1 1/8	1 1/8"		VAS 1 1/8		VAK 1 1/8
1 3/16"		RAS 1 3/16		RAK 1 3/16	1 3/16"		VAS 1 3/16		VAK 1 3/16
1 1/4S"		RAS 1 1/4S		RAS 1 1/4S	1 1/4S"		VAS 1 1/4S		VAK 1 1/4S
30mm		RAS 30		RAK 30	30mm		VAS 30		VAK 30
1 1/4"		RAS 1 1/4		RAK 1 1/4	1 1/4"		VAS 1 1/4		VAK 1 1/4
1 5/16"		RAS 1 5/16		RAK 1 5/16					
1 3/8"		RAS 1 3/8		RAK 1 3/8	1 3/8"		VAS 1 3/8		VAK 1 3/8
1 7/16"		RAS 1 7/16		RAK 1 7/16	1 7/16"		VAS 1 7/16		VAK 1 7/16
35mm		RAS 35		RAK 35	35mm		VAS 35		VAK 35
1 1/2"		RAS 1 1/2		RAK 1 1/2	1 1/2"		VAS 1 1/2		VAK 1 1/2
1 9/16"		RAS 1 9/16		RAK 1 9/16					
40mm		RAS 40		RAK 40	40mm		VAS 40		VAK 40
1 5/8"		RAS 1 5/8		RAK 1 5/8	1 5/8"		VAS 1 5/8		VAK 1 5/8
1 11/16"		RAS 1 11/16		RAK 1 11/16	1 11/16"		VAS 1 11/16		VAK 1 11/16
1 3/4"		RAS 1 3/4		RAK 1 3/4	1 3/4"		VAS 1 3/4		VAK 1 3/4
45mm		RAS 45		RAK 45	45mm		VAS 45		VAK 45
1 7/8"		RAS 1 7/8		RAK 1 7/8	1 7/8"		VAS 1 7/8		VAK 1 7/8
1 15/16"		RAS 1 15/16		RAK 1 15/16	1 15/16"		VAS 1 15/16		VAK 1 15/16
50mm		RAS 50		RAK 50	2S"		VAS 2		VAK 2S
2"		RAS 2		RAK 2	50mm		VAS 50		VAK 50
2 1/8"		RAS 2 1/8		RAK 2 1/8	2"		VAS 2		VAK 2
2 3/16"		RAS 2 3/16		RAK 2 3/16	2 3/16"		VAS 2 3/16		VAK 2 3/16
55mm		RAS 55		RAK 55	55mm		VAS 55		VAK 55
2 1/4"		RAS 2 1/4		RAK 2 1/4					
2 3/8"		RAS 2 3/8		RAK 2 3/8					
2 7/16"		RAS 2 7/16		RAK 2 7/16					
60mm		RAS 60		RAK 60					
2 11/16"		RAS 2 11/16		RAK 2 11/16					
70mm		RAS 70		RAK 70					
2 15/16"		RAS 2 15/16		RAK 2 15/16					
75mm		RAS 75		RAK 75					

NOTE: Timken has made every effort to ensure the accuracy of this interchange, however, Timken is not liable for any errors or omissions.
Bolded parts indicate popular bearing sizes.

Stronger. By Design.



FAFNIR® BALL BEARINGS 4-BOLT & 2-BOLT FLANGES Replacement Bearings for Sealmaster



4-BOLT & 2-BOLT FLANGES WITH SET SCREW LOCKING

INDUSTRIAL INSERT							STANDARD INSERT				
Shaft Size	4-Bolt Flanges			2-Bolt Flanges			Shaft Size	4-Bolt Flanges		2-Bolt Flanges	
	SEALMASTER	TIMKEN		SEALMASTER	TIMKEN			SEALMASTER	TIMKEN	SEALMASTER	TIMKEN
1/2"	SF-8	SF-8C	YCJ 1/2	SFT-8	SFT-8C	YCJT 1/2	1/2"		SCJ 1/2		SCJT 1/2
5/8"	SF-10	SF-10C	YCJ 5/8	SFT-10	SFT-10C	YCJT 5/8	5/8"		SCJ 5/8		SCJT 5/8
17mm			YCJ 17			YCJT 17	17mm		SCJ 17		SCJT 17
3/4"	SF-12	SF-12C	YCJ 3/4	SFT-12	SFT-12C	YCJT 3/4	3/4"		SCJ 3/4		SCJT 3/4
20mm	SF-204	SF-204C	YCJ 20	SFT-204	SFT-204C	YCJT 20	20mm		SCJ 20		SCJT 20
7/8"	SF-14	SF-14C	YCJ 7/8	SFT-14	SFT-14C	YCJT 7/8	7/8"		SCJ 7/8		SCJT 7/8
15/16"	SF-15	SF-15C	YCJ 15/16	SFT-15	SFT-15C	YCJT 15/16	15/16"		SCJ 15/16		SCJT 15/16
1"	SF-16	SF-16C	YCJ 1	SFT-16	SFT-16C	YCJT 1	1"		SCJ 1		SCJT 1
25mm	SF-205	SF-205C	YCJ 25	SFT-205	SFT-205C	YCJT 25	25mm		SCJ 25		SCJT 25
1 1/8"	SF-18	SF-18C	YCJ 1 1/8	SFT-18	SFT-18C	YCJT 1 1/8	1 1/8"		SCJ 1 1/8		SCJT 1 1/8
1 3/16"	SF-19	SF-19C	YCJ 1 3/16	SFT-19	SFT-19C	YCJT 1 3/16	1 3/16"		SCJ 1 3/16		SCJT 1 3/16
1 1/4S"	SF-20R	SF-20RC	YCJ 1 1/4S	SFT-20R	SFT-20RC	YCJT 1 1/4S	1 1/4S"		SCJ 1 1/4S		SCJT 1 1/4S
30mm	SF-206	SF-206C	YCJ 30	SFT-206	SFT-206C	YCJT 30	30mm		SCJ 30		SCJT 30
1 1/4"	SF-20	SF-20C	YCJ 1 1/4	SFT-20	SFT-20C	YCJT 1 1/4	1 1/4"		SCJ 1 1/4		SCJT 1 1/4
1 3/8"	SF-22	SF-22C	YCJ 1 3/8	SFT-22	SFT-22C	YCJT 1 3/8	1 3/8"		SCJ 1 3/8		SCJT 1 3/8
1 7/16"	SF-23	SF-23C	YCJ 1 7/16	SFT-23	SFT-23C	YCJT 1 7/16	1 7/16"		SCJ 1 7/16		SCJT 1 7/16
35mm	SF-207	SF-207C	YCJ 35	SFT-207	SFT-207C	YCJT 35	35mm		SCJ 35		SCJT 35
1 1/2"	SF-24	SF-24C	YCJ 1 1/2	SFT-24	SFT-24C	YCJT 1 1/2	1 1/2"		SCJ 1 1/2		SCJT 1 1/2
40mm	SF-208	SF-208C	YCJ 40	SFT-208	SFT-208C	YCJT 40	40mm		SCJ 40		SCJT 40
1 5/8"	SF-26	SF-26C	YCJ 1 5/8	SFT-26	SFT-26C	YCJT 1 5/8	1 5/8"		SCJ 1 5/8		SCJT 1 5/8
1 11/16"	SF-27	SF-27C	YCJ 1 11/16	SFT-27	SFT-27C	YCJT 1 11/16	1 11/16"		SCJ 1 11/16		SCJT 1 11/16
1 3/4"	SF-28	SF-28C	YCJ 1 3/4	SFT-28	SFT-28C	YCJT 1 3/4	1 3/4"		SCJ 1 3/4		SCJT 1 3/4
45mm	SF-209	SF-209C	YCJ 45	SFT-209	SFT-209C	YCJT 45	45mm		SCJ 45		SCJT 45
1 15/16"	SF-31	SF-31C	YCJ 1 15/16	SFT-31	SFT-31C	YCJT 1 15/16	1 15/16"		SCJ 1 15/16		SCJT 1 15/16
2S"	SF-32R	SF-32RC	YCJ 2S	SFT-32R	SFT-32RC	YCJT 2S	2S"		SCJ 2S		SCJT 2S
50mm	SF-210	SF-210C	YCJ 50	SFT-210	SFT-210C	YCJT 50	50mm		SCJ 50		SCJT 50
2"	SF-32	SF-32C	YCJ 2	SFT-32	SFT-32C	YCJT 2	2"		SCJ 2		SCJT 2
2 3/16"	SF-35	SF-35C	YCJ 2 3/16	SFT-35	SFT-35C	YCJT 2 3/16	2 3/16"		SCJ 2 3/16		SCJT 2 3/16
55mm	SF-211	SF-211C	YCJ 55	SFT-211	SFT-211C	YCJT 55	55mm		SCJ 55		SCJT 55
2 7/16"	SF-39	SF-39C	YCJ 2 7/16								
60mm	SF-212	SF-212 C	YCJ 60								
2 11/16"	SF-43	SF-43C	YCJ 2 11/16								
70mm	SF-214	SF-214C	YCJ 70								
2 15/16"	SF-47	SF-47C	YCJ 2 15/16								
75mm	SF-215	SF-215C	YCJ 75								

NOTE: Timken has made every effort to ensure the accuracy of this interchange, however, Timken is not liable for any errors or omissions.

Bolded parts indicate popular bearing sizes.

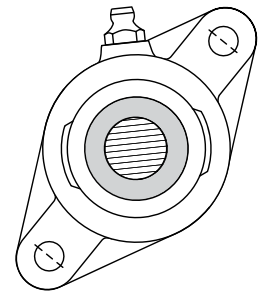
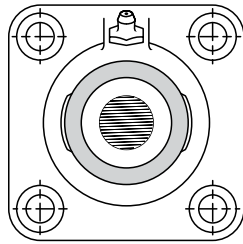
NOTE: Most Y Series industrial bearing inserts can be equipped with Shaft Guarding Technology™ for shaft protection, add SGT to the part number when ordering.

Stronger. By Design.



FAFNIR® BALL BEARINGS 4-BOLT & 2-BOLT FLANGES

Replacement Bearings for Sealmaster



4-BOLT & 2-BOLT FLANGES WITH ECCENTRIC LOCKING

INDUSTRIAL INSERT					STANDARD INSERT				
Shaft Size	4-Bolt Flanges		2-Bolt Flanges		Shaft Size	4-Bolt Flanges		2-Bolt Flanges	
	SEALMASTER	TIMKEN	SEALMASTER	TIMKEN		SEALMASTER	TIMKEN	SEALMASTER	TIMKEN
1/2"		RCJ 1/2		RCJT 1/2	1/2"		VCJ 1/2		VCJT 1/2
5/8"		RCJ 5/8		RCJT 5/8	5/8"		VCJ 5/8		VCJT 5/8
11/16"		RCJ 11/16		RCJT 11/16					
17mm		RCJ 17		RCJT 17	17mm		VCJ 17		VCJT 17
3/4"		RCJ 3/4		RCJT 3/4	3/4"		VCJ 3/4		VCJT 3/4
20mm		RCJ 20		RCJT 20	20mm		VCJ 20		VCJT 20
7/8"		RCJ 7/8		RCJT 7/8	7/8"		VCJ 7/8		VCJT 7/8
15/16"		RCJ 15/16		RCJT 15/16	15/16"		VCJ 15/16		VCJT 15/16
1"		RCJ 1		RCJT 1	1"		VCJ 1		VCJT 1
25mm		RCJ 25		RCJT 25	25mm		VCJ 25		VCJT 25
1 1/16"		RCJ 1 1/16		RCJT 1 1/16					
1 1/8"		RCJ 1 1/8		RCJT 1 1/8	1 1/8"		VCJ 1 1/8		VCJT 1 1/8
1 3/16"		RCJ 1 3/16		RCJT 1 3/16	1 3/16"		VCJ 1 3/16		VCJT 1 3/16
1 1/4S"		RCJ 1 1/4S		RCJT 1 1/4S	1 1/4S"		VCJ 1 1/4S		VCJT 1 1/4S
30mm		RCJ 30		RCJT 30	30mm		VCJ 30		VCJT 30
1 1/4"		RCJ 1 1/4		RCJT 1 1/4	1 1/4"		VCJ 1 1/4		VCJT 1 1/4
1 5/16"		RCJ 1 5/16		RCJT 1 5/16					
1 3/8"		RCJ 1 3/8		RCJT 1 3/8	1 3/8"		VCJ 1 3/8		VCJT 1 3/8
1 7/16"		RCJ 1 7/16		RCJT 1 7/16	1 7/16"		VCJ 1 7/16		VCJT 1 7/16
35mm		RCJ 35		RCJT 35	35mm		VCJ 35		VCJT 35
1 1/2"		RCJ 1 1/2		RCJT 1 1/2	1 1/2"		VCJ 1 1/2		VCJT 1 1/2
1 9/16"		RCJ 1 9/16		RCJT 1 9/16					
40mm		RCJ 40		RCJT 40	40mm		VCJ 40		VCJT 40
1 5/8"		RCJ 1 5/8		RCJT 1 5/8	1 5/8"		VCJ 1 5/8		VCJT 1 5/8
1 11/16"		RCJ 1 11/16		RCJT 1 11/16	1 11/16"		VCJ 1 11/16		VCJT 1 11/16
1 3/4"		RCJ 1 3/4		RCJT 1 3/4	1 3/4"		VCJ 1 3/4		VCJT 1 3/4
45mm		RCJ 45		RCJT 45	45mm		VCJ 45		VCJT 45
1 7/8"		RCJ 1 7/8		RCJT 1 7/8	1 7/8"		VCJ 1 7/8		VCJT 1 7/8
1 15/16"		RCJ 1 15/16		RCJT 1 15/16	1 15/16"		VCJ 1 15/16		VCJT 1 15/16
2S"		RCJ 2S		RCJT 2S	2S"		VCJ 2S		VCJT 2S
50mm		RCJ 50		RCJT 50	50mm		VCJ 50		VCJT 50
2"		RCJ 2		RCJT 2	2"		VCJ 2		VCJT 2
2 1/8"		RCJ 2 1/8		RCJT 2 1/8					
2 3/16"		RCJ 2 3/16		RCJT 2 3/16	2 3/16"		VCJ 2 3/16		VCJT 2 3/16
55mm		RCJ 55		RCJT 55	55mm		VCJ 55		VCJT 55
2 1/4"		RCJ 2 1/4							
2 3/8"		RCJ 2 3/8							
2 7/16"		RCJ 2 7/16							
60mm		RCJ 60							
2 11/16"		RCJ 2 11/16							
70mm		RCJ 70							
2 15/16"		RCJ 2 15/16							
75mm		RCJ 75							

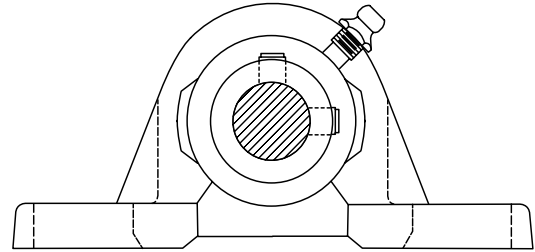
NOTE: Timken has made every effort to ensure the accuracy of this interchange, however, Timken is not liable for any errors or omissions.

Bolded parts indicate popular bearing sizes.

Stronger. By Design.



FAFNIR® BALL BEARINGS PILLOW BLOCKS Replacement Bearings for Linkbelt



PILLOW BLOCKS WITH SET SCREW LOCKING

INDUSTRIAL INSERT					STANDARD INSERT				
Shaft Size	High Base to Center Height		Low Base to Center Height		Shaft Size	High Base to Center Height		Low Base to Center Height	
	LINKBELT	TIMKEN	LINKBELT	TIMKEN		LINKBELT	TIMKEN	LINKBELT	TIMKEN
1/2"	P3-U2B08N	YAS 1/2	PL3-U2B08N	YAK 1/2	1/2"	P3-S2B08E	SAS 1/2	PL3-S2B08E	SAK 1/2
5/8"	P3-U210N	YAS 5/8	PL3-U210N	YAK 5/8	5/8"	P3S210E	SAS 5/8	PL3-S210E	SAK 5/8
17mm	P3-U2M17N	YAS 17	PL3-U2M17N	YAK 17	17mm		SAS 17		SAK 17
3/4"	P3-U212N	YAS 3/4	PL3-U212N	YAK 3/4	3/4"	P3-S212E	SAS 3/4	PL3-S212E	SAK 3/4
20mm	P3-U2M20N	YAS 20	PL3-U2M20N	YAK 20	20mm	P3-S2M20E	SAS 20	PL3-S2M20E	SAK 20
7/8"	P3-U214N	YAS 7/8	PL3-U214N	YAK 7/8	7/8"	P3-S214E	SAS 7/8	PL3-S214E	SAK 7/8
15/16"	P3U215N	YAS 15/16	PL3-U215N	YAK 15/16	15/16"	P3-S215E	SAS 15/16	PL3-S215E	SAK 15/16
1"	P3-U216N	YAS 1	PL3-U216N	YAK 1	1"	P3-S216E	SAS 1	PL3-S216E	SAK 1
25mm	P3-U2M25N	YAS 25	PL3-U2M25N	YAK 25	25mm	P3-S2M25E	SAS 25	PL3-S2M25E	SAK 25
1 1/8"	P3-U218N	YAS 1 1/8	PL3-U218N	YAK 1 1/8	1 1/8"	P3-S218E	SAS 1 1/8	PL3-S218E	SAK 1 1/8
1 3/16"	P3-U219N	YAS 1 3/16	PL3-U219N	YAK 1 3/16	1 3/16"	P3-S219E	SAS 1 3/16	PL3-S219E	SAK 1 3/16
1 1/4S"	P3-U2E20N	YAS 1 1/4S	PL3-U2E20N	YAK 1 1/4S	1 1/4S"	P3-S2E20E	SAS 1 1/4S	PL3-S2E20E	SAK 1 1/4S
30mm	P3-U2M30N	YAS 30	PL3-U2M30N	YAK 30	30mm	P3-S2M30E	SAS 30	PL3-S2M30E	SAK 30
1 1/4"	P3-U220N	YAS 1 1/4	PL3-U220N	YAK 1 1/4	1 1/4"	P3-S220E	SAS 1 1/4	PL3-S220E	SAK 1 1/4
1 3/8"	P3U222N	YAS 1 3/8	PL3-U222N	YAK 1 3/8	1 3/8"	P3-S222E	SAS 1 3/8	PL3-S222E	SAK 1 3/8
1 7/16"	P3-U223N	YAS 1 7/16	PL3-U223N	YAK 1 7/16	1 7/16"	P3-S223E	SAS 1 7/16	PL3-S223E	SAK 1 7/16
35mm	P3-U2M35N	YAS 35	PL3-U2M35N	YAK 35	35mm	P3-S2M35E	SAS 35	PL3-S2M35E	SAK 35
1 1/2"	P3-U224N	YAS 1 1/2	PL3-U224N	YAK 1 1/2	1 1/2"	P3-S224E	SAS 1 1/2	PL3-S224E	SAK 1 1/2
40mm	P3-U2M40N	YAS 40	PL3-U2M40N	YAK 40	40mm	P3-S2M40E	SAS 40	PL3-S2M40E	SAK 40
1 1/2H"		YAS 1 1/2H		YAK 1 1/2H	1 1/2H"		SAS 1 1/2H		SAK 1 1/2H
1 5/8"	P3-U226N	YAS 1 5/8	PL3-U226N	YAK 1 5/8	1 5/8"	P3-S226E	SAS 1 5/8	PL3-S226E	SAK 1 5/8
1 11/16"	P3-U227N	YAS 1 11/16	PL3-U227N	YAK 1 11/16	1 11/16"	P3-S227E	SAS 1 11/16	PL3-S227E	SAK 1 11/16
1 3/4"	P3-U228N	YAS 1 3/4	PL3-U228N	YAK 1 3/4	1 3/4"	P3-S228E	SAS 1 3/4	PL3-S228E	SAK 1 3/4
45mm	P3-U2M45N	YAS 45	PL3-U2M45N	YAK 45	45mm		SAS 45		SAK 45
1 15/16"	P3-U231N	YAS 1 15/16	PL3-U231N	YAK 1 15/16	1 15/16"	P3-S231E	SAS 1 15/16	PL3-S231E	SAK 1 15/16
2S"	P3-U2E32N	YAS 2S	PL3-U2E32N	YAK 2S	2S"	P3-S2E32E	SAS 2S	PL3-S2E32E	SAK 2S
50mm	P3-U2M50N	YAS 50	PL3-U2M50N	YAK 50	50mm		SAS 50		SAK 50
2"	P3-U232N	YAS 2	PL3-U232N	YAK 2	2"	P3-S232E	SAS 2	PL3-S232E	SAK 2
2 3/16"	P3-U235N	YAS 2 3/16	PL3-U235N	YAK 2 3/16	2 3/16"	P3-S235E	SAS 2 3/16	PL3-S235E	SAK 2 3/16
55mm	P3-U2M55N	YAS 55	PL3-U2M55N	YAK 55	55mm		SAS 55		SAK 55
2 1/4"	P3-U236N	YAS 2 1/4	PL3-U236N	YAK 2 1/4					
2 7/16"	P3-U239N	YAS 2 7/16	PL3-U239N	YAK 2 7/16					
60mm	P3-U2M60N	YAS 60	PL3-U2M60N	YAK 60					
2 11/16"	P3-U243N	YAS 2 11/16		YAK 2 11/16					
70mm		YAS 70		YAK 70					
2 15/16"	P3-U247N	YAS 2 15/16		YAK 2 15/16					
75mm	P3-U2M75N	YAS 75		YAK 75					

NOTE: Timken has made every effort to ensure the accuracy of this interchange, however, Timken is not liable for any errors or omissions.

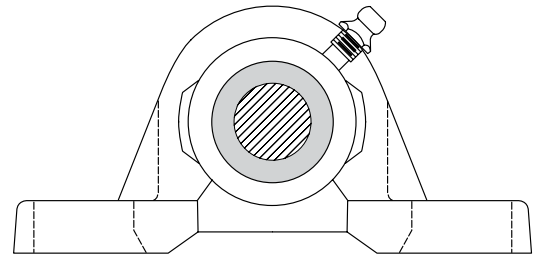
Bolded parts indicate popular bearing sizes.

NOTE: Most Y Series industrial bearing inserts can be equipped with Shaft Guarding Technology™ for shaft protection, add SGT to the part number when ordering.

Stronger. By Design.



FAFNIR® BALL BEARINGS PILLOW BLOCKS Replacement Bearings for Linkbelt



PILLOW BLOCKS WITH ECCENTRIC LOCKING

INDUSTRIAL INSERT					STANDARD INSERT				
Shaft Size	High Base to Center Height	Low Base to Center Height	LINKBELT	TIMKEN	Shaft Size	High Base to Center Height	Low Base to Center Height	LINKBELT	TIMKEN
1/2"	P3-Y2B08N	RAS 1/2	PL3-Y2B08N	RAK 1/2	1/2"	P3-W2B08E	VAS 1/2	PL3-W2B08E	VAK 1/2
5/8"	P3-Y210N	RAS 5/8	PL3-Y210N	RAK 5/8	5/8"	P3-W210E	VAS 5/8	PL3-W210E	VAK 5/8
11/16"	P3-Y211 N	RAS 11/16	PL3-Y211 N	RAK 11/16					
17mm		RAS 17		RAK 17	17mm		VAS 17		VAK 17
3/4"	P3-Y212N	RAS 3/4	PL3-Y212N	RAK 3/4	3/4"	P3-W212E	VAS 3/4	PL3W212E	VAK 3/4
20mm		RAS 20		RAK 20	20mm		VAS 20		VAK 20
7/8"	P3-Y214N	RAS 7/8	PL3-Y214N	RAK 7/8	7/8"	P3-W214E	VAS 7/8	PL3-W214E	VAK 7/8
15/16"	P3-Y215N	RAS 15/16	PL3-Y215N	RAK 15/16	15/16"	P3-W215E	VAS 15/16	PL3-W215E	VAK 15/16
1"	P3-Y216N	RAS 1	PL3-Y216N	RAK 1	1"	P3-W216E	VAS 1	PL3-W216E	VAK 1
25mm		RAS 25		RAK 25	25mm		VAS 25		VAK 25
1 1/16"		RAS 1 1/16		RAK 1 1/16					
1 1/8"	P3-Y218N	RAS 1 1/8	PL3-Y218N	RAK 1 1/8	1 1/8"	P3-W218E	VAS 1 1/8	PL3-W218E	VAK 1 1/8
1 3/16"	P3-Y219N	RAS 1 3/16	PL3-Y219N	RAK 1 3/16	1 3/16"	P3-W219E	VAS 1 3/16	PL3-W219E	VAK 1 3/16
1 1/4S"		RAS 1 1/4S		RAK 1 1/4S	1 1/4S"	P3-W2E20E	VAS 1 1/4S	PL3-W2E20E	VAK 1 1/4S
30mm		RAS 30		RAK 30	30mm		VAS 30		VAK 30
1 1/4"	P3-Y220N	RAS 1 1/4	PL3-Y220N	RAK 1 1/4	1 1/4"	P3-W220E	VAS 1 1/4	PL3-W220E	VAK 1 1/4
1 5/16"		RAS 1 5/16		RAK 1 5/16					
1 3/8"	P3-Y222N	RAS 1 3/8	PL3-Y222N	RAK 1 3/8	1 3/8"	P3W222E	VAS 1 3/8	PL3-W222E	VAK 1 3/8
1 7/16"	P3-Y223N	RAS 1 7/16	PL3-Y223N	RAK 1 7/16	1 7/16"	P3-W223E	VAS 1 7/16	PL3-W223E	VAK 1 7/16
35mm		RAS 35		RAK 35	35mm		VAS 35		VAK 35
1 1/2"	P3-Y224N	RAS 1 1/2	PL3-Y224N	RAK 1 1/2	1 1/2"	P3-W224E	VAS 1 1/2	PL3-W224E	VAK 1 1/2
1 9/16"		RAS 1 9/16		RAK 1 9/16					
40mm		RAS 40		RAK 40	40mm		VAS 40		VAK 40
1 5/8"	P3-Y226N	RAS 1 5/8	PL3-Y226N	RAK 1 5/8	1 5/8"	P3-W226E	VAS 1 5/8	PL3-W226E	VAK 1 5/8
1 11/16"	P3-Y227N	RAS 1 11/16	PL3-Y227N	RAK 1 11/16	1 11/16"	P3-W227E	VAS 1 11/16	PL3-W227E	VAK 1 11/16
1 3/4"	P3-Y228N	RAS 1 3/4	PL3-Y228N	RAK 1 3/4	1 3/4"	P3-W228E	VAS 1 3/4	PL3-W228E	VAK 1 3/4
45mm		RAS 45		RAK 45	45mm		VAS 45		VAK 45
1 7/8"		RAS 1 7/8		RAK 1 7/8	1 7/8"		VAS 1 7/8		VAK 1 7/8
1 15/16"	P3-Y231N	RAS 1 15/16	PL3-Y231N	RAK 1 15/16	1 15/16"	P3-W231E	VAS 1 15/16	PL3-W231E	VAK 1 15/16
50mm		RAS 50		RAK 50	2S"	P3-W2E32E	VAS 2S	PL3-W2E32E	VAK 2S
2"	P3-Y232N	RAS 2	PL3-Y232N	RAK 2	2"		VAS 2		VAK 2
2 1/8"		RAS 2 1/8		RAK 2 1/8					
2 3/16"	P3-Y235N	RAS 2 3/16	PL3-Y235N	RAK 2 3/16	2 3/16"		VAS 2 3/16		VAK 2 3/16
55mm		RAS 55		RAK 55	55mm		VAS 55		VAK 55
2 1/4"	P3-Y236N	RAS 2 1/4	PL3-Y236N	RAK 2 1/4					
2 3/8"	P3-Y238N	RAS 2 3/8	PL3-Y238N	RAK 2 3/8					
2 7/16"	P3-Y239N	RAS 2 7/16	PL3-Y239N	RAK 2 7/16					
60mm		RAS 60		RAK 60					
2 11/16"		RAS 2 11/16		RAK 2 11/16					
70mm		RAS 70		RAK 70					
2 15/16"		RAS 2 15/16		RAK 2 15/16					
75mm		RAS 75		RAK 75					

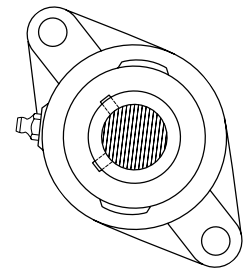
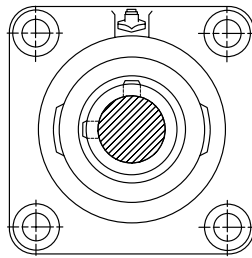
NOTE: Timken has made every effort to ensure the accuracy of this interchange, however, Timken is not liable for any errors or omissions.

Bolded parts indicate popular bearing sizes.

Stronger. By Design.



FAFNIR® BALL BEARINGS 4-BOLT & 2-BOLT FLANGES Replacement Bearings for Linkbelt



4-BOLT & 2-BOLT FLANGES WITH SET SCREW LOCKING

INDUSTRIAL INSERT					STANDARD INSERT				
Shaft Size	4-Bolt Flanges		2-Bolt Flanges		Shaft Size	4-Bolt Flanges		2-Bolt Flanges	
	LINKBELT	TIMKEN	LINKBELT	TIMKEN		LINKBELT	TIMKEN	LINKBELT	TIMKEN
1/2"	F3-U2B08N	YCJ 1/2	FX3-U2B08N	YCJT 1/2	1/2"	F3-S2B08E	SCJ 1/2	FX3-S2B08E	SCJT 1/2
5/8"	F3-U210N	YCJ 5/8	FX3-U210N	YCJT 5/8	5/8"	F3S210E	SCJ 5/8	FX3-S210E	SCJT 5/8
17mm	F3-U2M17N	YCJ 17	FX3-U2M17N	YCJT 17	17mm		SCJ 17		SCJT 17
3/4"	F3-U212N	YCJ 3/4	FX3-U212N	YCJT 3/4	3/4"	F3-S212E	SCJ 3/4	FX3-S212E	SCJT 3/4
20mm	F3-U2M20N	YCJ 20	FX3-U2M20N	YCJT 20	20mm	F3-S2M20E	SCJ 20	FX3-S2M20E	SCJT 20
7/8"	F3-U214N	YCJ 7/8	FX3-U214N	YCJT 7/8	7/8"	F3-S214E	SCJ 7/8	FX3-S214E	SCJT 7/8
15/16"	F3-U215N	YCJ 15/16	FX3-U215N	YCJT 15/16	15/16"	F3-S215E	SCJ 15/16	FX3-S215E	SCJT 15/16
1"	F3-U216N	YCJ 1	FX3-U216N	YCJT 1	1"	F3-S216E	SCJ 1	FX3-S216E	SCJT 1
25mm	F3-U2M25N	YCJ 25	FX3-U2M25N	YCJT 25	25mm	F3-S2M25E	SCJ 25	FX3-S2M25E	SCJT 25
1 1/8"	F3-U218N	YCJ 1 1/8	FX3-U218N	YCJT 1 1/8	1 1/8"	F3-S218E	SCJ 1 1/8	FX3-S218E	SCJT 1 1/8
1 3/16"	F3-U219N	YCJ 1 3/16	FX3-U219N	YCJT 1 3/16	1 3/16"	F3-S219E	SCJ 1 3/16	FX3-S219E	SCJT 1 3/16
1 1/4"	F3-U2E20N	YCJ 1 1/4S	FX3-U2E20N	YCJT 1 1/4S	1 1/4"	F3-S2E20E	SCJ 1 1/4S	FX3-S2E20E	SCJT 1 1/4S
30mm	F3-U2M30N	YCJ 30	FX3-U2M30N	YCJT 30	30mm	F3-S2M30E	SCJ 30	FX3-S2M30E	SCJT 30
1 1/4"	F3-U220N	YCJ 1 1/4	FX3-U220N	YCJT 1 1/4	1 1/4"	F3-S220E	SCJ 1 1/4	FX3-S220E	SCJT 1 1/4
1 3/8"	F3-U222N	YCJ 1 3/8	FX3-U222N	YCJT 1 3/8	1 3/8"	F3-S222E	SCJ 1 3/8	FX3-S222E	SCJT 1 3/8
1 7/16"	F3-U223N	YCJ 1 7/16	FX3-U223N	YCJT 1 7/16	1 7/16"	F3-S223E	SCJ 1 7/16	FX3-S223E	SCJT 1 7/16
35mm	F3-U2M35N	YCJ 35	FX3-U2M35N	YCJT 35	35mm	F3-S2M35E	SCJ 35	FX3-S2M35E	SCJT 35
1 1/2"	F3-U224N	YCJ 1 1/2	FX3-U224N	YCJT 1 1/2	1 1/2"	F3-S224E	SCJ 1 1/2	FX3-S224E	SCJT 1 1/2
40mm	F3-U2M40N	YCJ 40	FX3-U2M40N	YCJT 40	40mm	F3-S2M40E	SCJ 40	FX3-S2M40E	SCJT 40
1 5/8"	F3-U226N	YCJ 1 5/8	FX3-U226N	YCJT 1 5/8	1 5/8"	F3-S226E	SCJ 1 5/8	FX3-S226E	SCJT 1 5/8
1 11/16"	F3-U227N	YCJ 1 11/16	FX3-U227N	YCJT 1 11/16	1 11/16"	F3-S227E	SCJ 1 11/16	FX3-S227E	SCJT 1 11/16
1 3/4"	F3-U228N	YCJ 1 3/4	FX3-U228N	YCJT 1 3/4	1 3/4"	F3-S228E	SCJ 1 3/4	FX3-S228E	SCJT 1 3/4
45mm	F3-U2M45N	YCJ 45	FX3-U2M45N	YCJT 45	45mm		SCJ 45		SCJT 45
1 15/16"	F3-U231N	YCJ 1 15/16	FX3-U231N	YCJT 1 15/16	1 15/16"	F3-S231E	SCJ 1 15/16	FX3-S231E	SCJT 1 15/16
2S"	F3-U2E32N	YCJ 2S	FX3-U2E32N	YCJT 2S	2S"	F3-S2E32E	SCJ 2S	FX3-S2E32E	SCJT 2S
50mm	F3-U2M50N	YCJ 50	FX3-U2M50N	YCJT 50	50mm		SCJ 50		SCJT 50
2"	F3-U232N	YCJ 2	FX3-U232N	YCJT 2	2"	F3-S232E	SCJ 2	FX3-S232E	SCJT 2
2 3/16"	F3-U235N	YCJ 2 3/16	FX3-U235N	YCJT 2 3/16	2 3/16"	F3-S235E	SCJ 2 3/16	FX3-S235E	SCJT 2 3/16
55mm	F3-U2M55N	YCJ 55	FX3-U2M55N	YCJT 55	55mm		SCJ 55		SCJT 55
2 7/16"	F3-U239N	YCJ 2 7/16							
60mm	F3-U2M60N	YCJ 60							
2 11/16"	F3-U243N	YCJ 2 11/16							
70mm		YCJ 70							
2 15/16"	F3-U247N	YCJ 2 15/16							
75mm	F3-U2M75N	YCJ 75							

NOTE: Timken has made every effort to ensure the accuracy of this interchange, however, Timken is not liable for any errors or omissions.

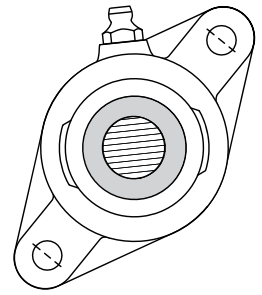
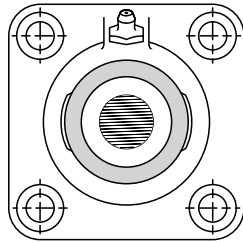
Bolded parts indicate popular bearing sizes.

NOTE: Most Y Series industrial bearing inserts can be equipped with Shaft Guarding Technology™ for shaft protection, add SGT to the part number when ordering.

Stronger. By Design.



FAFNIR® BALL BEARINGS 4-BOLT & 2-BOLT FLANGES Replacement Bearings for Linkbelt



4-BOLT & 2-BOLT FLANGES WITH ECCENTRIC LOCKING

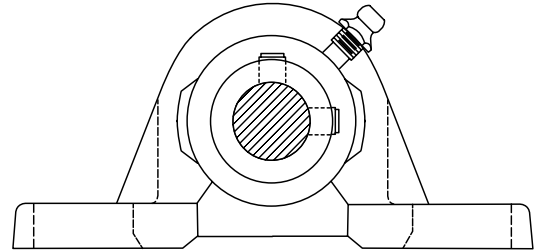
INDUSTRIAL INSERT					STANDARD INSERT				
Shaft Size	4-Bolt Flanges		2-Bolt Flanges		Shaft Size	4-Bolt Flanges		2-Bolt Flanges	
	LINKBELT	TIMKEN	LINKBELT	TIMKEN		LINKBELT	TIMKEN	LINKBELT	TIMKEN
1/2"		RCJ 1/2	FX3-Y2B08N	RCJT 1/2	1/2"	F3-W2B08E	VCJ 1/2	FX3-W2B08E	VCJT 1/2
5/8"		RCJ 5/8	FX3-Y210N	RCJT 5/8	5/8"	F3-W210E	VCJ 5/8	FX3-W210E	VCJT 5/8
11/16"		RCJ 11/16	FX3-Y211N	RCJT 11/16					
17mm		RCJ 17		RCJT 17	17mm		VCJ 17		VCJT 17
3/4"	F3-Y212N	RCJ 3/4	FX3-Y212N	RCJT 3/4	3/4"	F3-W212E	VCJ 3/4	FX3-W212E	VCJT 3/4
20mm		RCJ 20		RCJT 20	20mm		VCJ 20		VCJT 20
7/8"	F3-Y214N	RCJ 7/8	FX3-Y214N	RCJT 7/8	7/8"	F3-W214E	VCJ 7/8	FX3-W214E	VCJT 7/8
15/16"	F3-Y215N	RCJ 15/16	FX3-Y215N	RCJT 15/16	15/16"	F3-W215E	VCJ 15/16	FX3-W215E	VCJT 15/16
1"	F3-Y216N	RCJ 1	FX3-Y216N	RCJT 1	1"	F3-W216E	VCJ 1	FX3-W216E	VCJT 1
25mm		RCJ 25		RCJT 25	25mm		VCJ 25		VCJT 25
1 1/16"		RCJ 1 1/16		RCJT 1 1/16					
1 1/8"	F3-Y218N	RCJ 1 1/8	FX3-Y218N	RCJT 1 1/8	1 1/8"	F3-W218E	VCJ 1 1/8	FX3-W218E	VCJT 1 1/8
1 3/16"	F3-Y219N	RCJ 1 3/16	FX3-Y219N	RCJT 1 3/16	1 3/16"	F3-W219E	VCJ 1 3/16	FX3-W219E	VCJT 1 3/16
1 1/4S"		RCJ 1 1/4S		RCJT 1 1/4S	1 1/4S"	F3-W2E20E	VCJ 1 1/4S	FX3-W2E20E	VCJT 1 1/4S
30mm		RCJ 30		RCJT 30	30mm		VCJ 30		VCJT 30
1 1/4"	F3-Y220N	RCJ 1 1/4	FX3-Y220N	RCJT 1 1/4	1 1/4"	F3-W220E	VCJ 1 1/4	FX3-W220E	VCJT 1 1/4
1 5/16"		RCJ 1 5/16		RCJT 1 5/16		F3-W222E		FX3-W222E	
1 3/8"	F3-Y222N	RCJ 1 3/8	FX3-Y222N	RCJT 1 3/8	1 3/8"		VCJ 1 3/8		VCJT 1 3/8
1 7/16"	F3-Y223N	RCJ 1 7/16	FX3-Y223N	RCJT 1 7/16	1 7/16"	F3-W223E	VCJ 1 7/16	FX3-W223E	VCJT 1 7/16
35mm		RCJ 35		RCJT 35	35mm		VCJ 35		VCJT 35
1 1/2"	F3-Y224N	RCJ 1 1/2	FX3-Y224N	RCJT 1 1/2	1 1/2"	F3W224E	VCJ 1 1/2	FX3-W224E	VCJT 1 1/2
1 9/16"		RCJ 1 9/16		RCJT 1 9/16					
40mm		RCJ 40		RCJT 40	40mm		VCJ 40		VCJT 40
1 5/8"	F3-Y226N	RCJ 1 5/8	FX3-Y226N	RCJT 1 5/8	1 5/8"	F3-W226E	VCJ 1 5/8	FX3-W226E	VCJT 1 5/8
1 11/16"	F3-Y227N	RCJ 1 11/16	FX3-Y227N	RCJT 1 11/16	1 11/16"	F3-W227E	VCJ 1 11/16	FX3-W227E	VCJT 1 11/16
1 3/4"	F3-Y228N	RCJ 1 3/4	FX3-Y228N	RCJT 1 3/4	1 3/4"	F3-W228E	VCJ 1 3/4	FX3-W228E	VCJT 1 3/4
45mm		RCJ 45		RCJT 45	45mm		VCJ 45		VCJT 45
1 7/8"		RCJ 1 7/8		RCJT 1 7/8	1 7/8"		VCJ 1 7/8		VCJT 1 7/8
1 15/16"	F3-Y231N	RCJ 1 15/16	FX3-Y231N	RCJT 1 15/16	1 15/16"	F3-W231E	VCJ 1 15/16	FX3-W231E	VCJT 1 15/16
2S"		RCJ 2S		RCJT 2S	2S"	F3-W2E32E	VCJ 2S	FX3-W2E32E	VCJT 2S
50mm		RCJ 50		RCJT 50	50mm		VCJ 50		VCJT 50
2"	F3-Y232N	RCJ 2	FX3-Y232N	RCJT 2	2"		VCJ 2		VCJT 2
2 1/8"		RCJ 2 1/8		RCJT 2 1/8					
2 3/16"	F3-Y235N	RCJ 2 3/16	FX3-Y235N	RCJT 2 3/16	2 3/16"		VCJ 2 3/16		VCJT 2 3/16
55mm		RCJ 55		RCJT 55	55mm		VCJ 55		VCJT 55
2 1/4"	F3-Y236N	RCJ 2 1/4							
2 3/8"	F3-Y238N	RCJ 2 3/8							
2 7/16"	F3-Y239N	RCJ 2 7/16							
60mm		RCJ 60							
2 11/16"		RCJ 2 11/16							
70mm		RCJ 70							
2 15/16"		RCJ 2 15/16							
75mm		RCJ 75							

NOTE: Timken has made every effort to ensure the accuracy of this interchange, however, Timken is not liable for any errors or omissions.
Bolded parts indicate popular bearing sizes.

Stronger. By Design.



FAFNIR® BALL BEARINGS PILLOW BLOCKS Replacement Bearings for Browning



PILLOW BLOCKS WITH SET SCREW LOCKING

INDUSTRIAL INSERT					STANDARD INSERT				
Shaft Size	High Base to Center Height		Low Base to Center Height		Shaft Size	High Base to Center Height		Low Base to Center Height	
	BROWNING	TIMKEN	BROWNING	TIMKEN		BROWNING	TIMKEN	BROWNING	TIMKEN
1/2"	VPS-208	YAS 1/2	VPLS-208	YAK 1/2	1/2"	VPS-108	SAS 1/2	VPLS-108	SAK 1/2
5/8"	VPS-210	YAS 5/8	VPLS-210	YAK 5/8	5/8"	VPS-110	SAS 5/8	VPLS-110	SAK 5/8
17mm		YAS 17		YAK 17	17mm		SAS 17		SAK 17
3/4"	VPS-212	YAS 3/4	VPLS-212	YAK 3/4	3/4"	VPS-112	SAS 3/4	VPLS-112	SAK 3/4
20mm		YAS 20		YAK 20	20mm		SAS 20		SAK 20
7/8"	VPS-214	YAS 7/8	VPLS-214	YAK 7/8	7/8"	VPS-114	SAS 7/8	VPLS-114	SAK 7/8
15/16"	VPS-215	YAS 15/16	VPLS-215	YAK 15/16	15/16"	VPS-115	SAS 15/16	VPLS-115	SAK 15/16
1"	VPS-216	YAS 1	VPLS-216	YAK 1	1"	VPS-116	SAS 1	VPLS-116	SAK 1
25mm		YAS 25		YAK 25	25mm		SAS 25		SAK 25
1 1/8"	VPS-218	YAS 1 1/8	VPLS-218	YAK 1 1/8	1 1/8"	VPS-118	SAS 1 1/8	VPLS-118	SAK 1 1/8
1 3/16"	VPS-219	YAS 1 3/16	VPLS-219	YAK 1 3/16	1 3/16"	VPS-119	SAS 1 3/16	VPLS-119	SAK 1 3/16
1 1/4S"	VPS-220S	YAS 1 1/4S	VPLS-220LS	YAK 1 1/4S	1 1/4S"	VPS-120S	SAS 1 1/4S	VPLS-120S	SAK 1 1/4S
30mm		YAS 30		YAK 30	30mm		SAS 30		SAK 30
1 1/4"	VPS-220	YAS 1 1/4	VPLS-220	YAK 1 1/4	1 1/4"	VPS-120	SAS 1 1/4	VPLS-120	SAK 1 1/4
1 3/8"	VPS-222	YAS 1 3/8	VPLS-222	YAK 1 3/8	1 3/8"	VPS-122	SAS 1 3/8	VPLS-122	SAK 1 3/8
1 7/16"	VPS-223	YAS 1 7/16	VPLS-223	YAK 1 7/16	1 7/16"	VPS-123	SAS 1 7/16	VPLS-123	SAK 1 7/16
35mm		YAS 35		YAK 35	35mm		SAS 35		SAK 35
1 1/2"	VPS-224	YAS 1 1/2	VPLS-224	YAK 1 1/2	1 1/2"	VPS-124	SAS 1 1/2	VPLS-124	SAK 1 1/2
40mm		YAS 40		YAK 40	40mm		SAS 40		SAK 40
1 1/2H"		YAS 1 1/2H		YAK 1 1/2H	1 1/2H"		SAS 1 1/2H		SAK 1 1/2H
1 5/8"	VPS-226	YAS 1 5/8	VPLS-226	YAK 1 5/8	1 5/8"		SAS 1 5/8		SAK 1 5/8
1 11/16"	VPS-227	YAS 1 11/16	VPLS-227	YAK 1 11/16	1 11/16"	VPS-127	SAS 1 11/16	VPLS-127	SAK 1 11/16
1 3/4"	VPS-228	YAS 1 3/4	VPLS-228	YAK 1 3/4	1 3/4"	VPS-128	SAS 1 3/4	VPLS-128	SAK 1 3/4
45mm		YAS 45		YAK 45	45mm		SAS 45		SAK 45
1 15/16"	VPS-231	YAS 1 15/16	VPLS-231	YAK 1 15/16	1 15/16"	VPS-131	SAS 1 15/16	VPLS-131	SAK 1 15/16
2S"	VPS-232S	YAS 2S	VPLS-232LS	YAK 2S	2S"	VPS-132S	SAS 2S	VPLS-132S	SAK 2S
50mm		YAS 50		YAK 50	50mm		SAS 50		SAK 50
2"	VPS-232	YAS 2	VPLS-232	YAK 2	2"	VPS-132	SAS 2	VPLS-132	SAK 2
2 3/16"	VPS-235	YAS 2 3/16	VPLS-235	YAK 2 3/16	2 3/16"	VPS-135	SAS 2 3/16	VPLS-135	SAK 2 3/16
55mm		YAS 55		YAK 55	55mm		SAS 55		SAK 55
2 1/4"	VPS-236	YAS 2 1/4	VPLS-236	YAK 2 1/4					
2 7/16"	VPS-239	YAS 2 7/16	VPLS-239	YAK 2 7/16					
60mm		YAS 60		YAK 60					
2 11/16"	VPS-247	YAS 2 11/16		YAK 2 11/16					
70mm		YAS 70		YAK 70					
2 15/16"		YAS 2 15/16	VPLS-247	YAK 2 15/16					
75mm		YAS 75		YAK 75					

NOTE: Timken has made every effort to ensure the accuracy of this interchange, however, Timken is not liable for any errors or omissions.

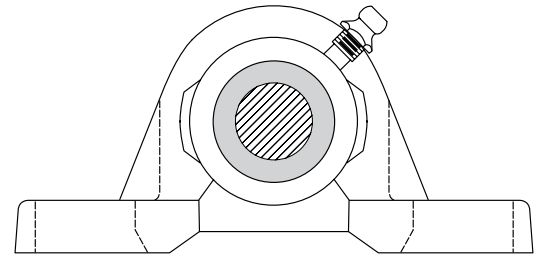
Bolded parts indicate popular bearing sizes.

NOTE: Most Y Series industrial bearing inserts can be equipped with Shaft Guarding Technology™ for shaft protection, add SGT to the part number when ordering.

Stronger. By Design.



FAFNIR® BALL BEARINGS PILLOW BLOCKS Replacement Bearings for Browning



PILLOW BLOCKS WITH ECCENTRIC LOCKING

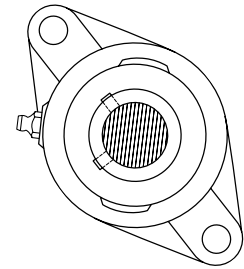
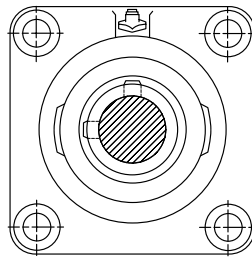
INDUSTRIAL INSERT					STANDARD INSERT				
Shaft Size	High Base to Center Height		Low Base to Center Height		Shaft Size	High Base to Center Height		Low Base to Center Height	
	BROWNING	TIMKEN	BROWNING	TIMKEN		BROWNING	TIMKEN	BROWNING	TIMKEN
1/2"	VPE-208	RAS 1/2	VPLE-208	RAK 1/2	1/2"	VPE-108	VAS 1/2	VPLE-108	VAK 1/2
5/8"	VPE-210	RAS 5/8	VPLE-210	RAK 5/8	5/8"	VPE-110	VAS 5/8	VPLE-110	VAK 5/8
11/16"		RAS 11/16		RAK 11/16					
17mm		RAS 17		RAK 17	17mm		VAS 17		VAK 17
3/4"	VPE-212	RAS 3/4	VPLE-212	RAK 3/4	3/4"	VPE-112	VAS 3/4	VPLE-112	VAK 3/4
20mm		RAS 20		RAK 20	20mm		VAS 25		VAK 20
7/8"	VPE-214	RAS 7/8	VPLE-214	RAK 7/8	7/8"	VPE-114	VAS 7/8	VPLE-114	VAK 7/8
15/16"	VPE-215	RAS 15/16	VPLE-215	RAK 15/16	15/16"	VPE-115	VAS 15/16	VPLE-115	VAK 15/16
1"	VPE-216	RAS 1	VPLE-216	RAK 1	1"	VPE-116	VAS 1	VPLE-116	VAK 1
25mm		RAS 25		RAK 25	25mm		VAS 25		VAK 25
1 1/16"		RAS 1 1/16		RAK 1 1/16					
1 1/8"	VPE-218	RAS 1 1/8	VPLE-218	RAK 1 1/8	1 1/8"	VPE-118	VAS 1 1/8	VPLE-118	VAK 1 1/8
1 3/16"	VPE-219	RAS 1 3/16	VPLE-219	RAK 1 3/16	1 3/16"	VPE-119	VAS 1 3/16	VPLE-119	VAK 1 3/16
1 1/4S"		RAS 1/4S		RAK 1/4S	1 1/4S"	VPE-120S	VAS 1 1/4S	VPLE-120S	VAK 1 1/4S
30mm		RAS 30		RAK 30	30mm		VAS 30		VAK 30
1 1/4"	VPE-220	RAS 1 1/4	VPLE-220	RAK 1 1/4	1 1/4"	VPE-120	VAS 1 1/4	VPLE-120	VAK 1 1/4
1 5/16"		RAS 1 5/16		RAK 1 5/16					
1 3/8"	VPE-222	RAS 1 3/8	VPLE-222	RAK 1 3/8	1 3/8"	VPE-122	VAS 1 3/8	VPLE-122	VAK 1 3/8
1 7/16"	VPE-223	RAS 1 7/16	VPLE-223	RAK 1 7/16	1 7/16"	VPE-123	VAS 1 7/16	VPLE-123	VAK 1 7/16
35mm		RAS 35		RAK 35	35mm		VAS 35		VAK 35
1 1/2"	VPE-224	RAS 1 1/2	VPLE-224	RAK 1 1/2	1 1/2"	VPE-124	VAS 1 1/2	VPLE-124	VAK 1 1/2
1 9/16"		RAS 1 9/16		RAK 1 9/16					
40mm		RAS 40		RAK 40	40mm		VAS 40		VAK 40
1 5/8"	VPE-226	RAS 1 5/8	VPLE-226	RAK 1 5/8	1 5/8"		VAS 1 5/8		VAK 1 5/8
1 11/16"	VPE-227	RAS 1 11/16	VPLE-227	RAK 1 11/16	1 11/16"	VPE-127	VAS 1 11/16	VPLE-127	VAK 1 11/16
1 3/4"	VPE-228	RAS 1 3/4	VPLE-228	RAK 1 3/4	1 3/4"	VPE-128	VAS 1 3/4	VPLE-128	VAK 1 3/4
45mm		RAS 45		RAK 45	45mm		VAS 45		VAK 45
1 7/8"		RAS 1 7/8		RAK 1 7/8	1 7/8"		VAS 1 7/8		VAK 1 7/8
1 15/16"	VPE-231	RAS 1 15/16	VPLE-231	RAK 1 15/16	1 15/16"	VPE-131	VAS 1 15/16	VPLE-131	VAK 1 15/16
50mm		RAS 50		RAK 50	50mm		VAS 50		VAK 50
2"	VPE-232	RAS 2	VPLE-232	RAK 2	2"	VPE-132	VAS 2	VPLE-132	VAK 2
2 1/8"		RAS 2 1/8		RAK 2 1/8					
2 3/16"	VPE-235	RAS 2 3/16	VPLE-235	RAK 2 3/16	2 3/16"	VPE-135	VAS 2 3/16	VPLE-135	VAK 2 3/16
55mm		RAS 55		RAK 55	55mm		VAS 55		VAK 55
2 1/4"	VPE-236	RAS 2 1/4	VPLE-236	RAK 2 1/4					
2 3/8"		RAS 2 3/8		RAK 2 3/8					
2 7/16"	VPE-239	RAS 2 7/16	VPLE-239	RAK 2 7/16					
60mm		RAS 60		RAK 60					
2 11/16"		RAS 2 11/16		RAK 2 11/16					
70mm		RAS 70		RAK 70					
2 15/16"	VPE-247	RAS 2 15/16	VPLE-247	RAK 2 15/16					
75mm		RAS 75		RAK 75					

NOTE: Timken has made every effort to ensure the accuracy of this interchange, however, Timken is not liable for any errors or omissions.
Bolded parts indicate popular bearing sizes.

Stronger. By Design.



FAFNIR® BALL BEARINGS 4-BOLT & 2-BOLT FLANGES Replacement Bearings for Browning



4-BOLT & 2-BOLT FLANGES WITH SET SCREW LOCKING

INDUSTRIAL INSERT					STANDARD INSERT				
Shaft Size	4-Bolt Flanges		2-Bolt Flanges		Shaft Size	4-Bolt Flanges		2-Bolt Flanges	
	BROWNING	TIMKEN	BROWNING	TIMKEN		BROWNING	TIMKEN	BROWNING	TIMKEN
1/2"	VF4S-208	YCJ 1/2	VF2S-208	YCJT 1/2	1/2"	VF4S-108	SCJ 1/2	VF2S-108	SCJT 1/2
5/8"	VF4S-210	YCJ 5/8	VF2S-210	YCJT 5/8	5/8"	VF4S-110	SCJ 5/8	VF2S-110	SCJT 5/8
17mm		YCJ 17		YCJT 17	17mm		SCJ 17		SCJT 17
3/4"	VF4S-212	YCJ 3/4	VF2S-212	YCJT 3/4	3/4"	VF4S-112	SCJ 3/4	VF2S-112	SCJT 3/4
20mm		YCJ 20		YCJT 20	20mm		SCJ 20		SCJT 20
7/8"	VF4S-214	YCJ 7/8	VF2S-214	YCJT 7/8	7/8"	VF4S-114	SCJ 7/8	VF2S-114	SCJT 7/8
15/16"	VF4S-215	YCJ 15/16	VF2S-215	YCJT 15/16	15/16"	VF4S-115	SCJ 15/16	VF2S-115	SCJT 15/16
1"	VF4S-216	YCJ 1	VF2S-216	YCJT 1	1"	VF4S-116	SCJ 1	VF2S-116	SCJT 1
25mm		YCJ 25		YCJT 25	25mm		SCJ 25		SCJT 25
1 1/8"	VF4S-218	YCJ 1 1/8	VF2S-218	YCJT 1 1/8	1 1/8"	VF4S-118	SCJ 1 1/8	VF2S-118	SCJT 1 1/8
1 3/16"	VF4S-219	YCJ 1 3/16	VF2S-219	YCJT 1 3/16	1 3/16"	VF4S-119	SCJ 1 3/16	VF2S-119	SCJT 1 3/16
1 1/4S"	VF4S-220S	YCJ 1 1/4S	VF2S-220S	YCJT 1 1/4S	1 1/4S"	VF4S-120S	SCJ 1 1/4S	VF2S-120S	SCJT 1 1/4S
30mm		YCJ 30		YCJT 30	30mm		SCJ 30		SCJT 30
1 1/4"	VF4S-220	YCJ 1 1/4	VF2S-220	YCJT 1 1/4	1 1/4"	VF4S-120	SCJ 1 1/4	VF2S-120	SCJT 1 1/4
1 3/8"	VF4S-222	YCJ 1 3/8	VF2S-222	YCJT 1 3/8	1 3/8"	VF4S-122	SCJ 1 3/8	VF2S-122	SCJT 1 3/8
1 7/16"	VF4S-223	YCJ 1 7/16	VF2S-223	YCJT 1 7/16	1 7/16"	VF4S-123	SCJ 1 7/16	VF2S-123	SCJT 1 7/16
35mm		YCJ 35		YCJT 35	35mm		SCJ 35		SCJT 35
1 1/2"	VF4S-224	YCJ 1 1/2	VF2S-224	YCJT 1 1/2	1 1/2"	VF4S-124	SCJ 1 1/2	VF2S-124	SCJT 1 1/2
40mm		YCJ 40		YCJT 40	40mm		SCJ 40		SCJT 40
1 5/8"	VF4S-226	YCJ 1 5/8	VF2S-226	YCJT 1 5/8	1 5/8"		SCJ 1 5/8		SCJT 1 5/8
1 11/16"	VF4S-227	YCJ 1 11/16	VF2S-227	YCJT 1 11/16	1 11/16"	VF4S-127	SCJ 1 11/16	VF2S-127	SCJT 1 11/16
1 3/4"	VF4S-228	YCJ 1 3/4	VF2S-228	YCJT 1 3/4	1 3/4"	VF4S-128	SCJ 1 3/4	VF2S-128	SCJT 1 3/4
45mm		YCJ 45		YCJT 45	45mm		SCJ 45		SCJT 45
1 15/16"	VF4S-231	YCJ 1 15/16	VF2S-231	YCJT 1 15/16	1 15/16"	VF4S-131	SCJ 1 15/16	VF2S-131	SCJT 1 15/16
2S"	VF4S-232S	YCJ 2S	VF2S-232S	YCJT 2S	2S"	VF4S-132S	SCJ 2S	VF2S-132S	SCJT 2S
50mm		YCJ 50		YCJT 50	50mm		SCJ 50		SCJT 50
2"	VF4S-232	YCJ 2	VF2S-232	YCJT 2	2"	VF4S-132	SCJ 2	VF2S-132	SCJT 2
2 3/16"	VF4S-235	YCJ 2 3/16	VF2S-235	YCJT 2 3/16	2 3/16"	VF4S-135	SCJ 2 3/16	VF2S-135	SCJT 2 3/16
55mm		YCJ 55		YCJT 55	55mm		SCJ 55		SCJT 55
2 7/16"	VF4S-239	YCJ 2 7/16							
60mm		YCJ 60							
2 11/16"	VF4S-243	YCJ 2 11/16							
70mm		YCJ 70							
2 15/16"	VF4S-247	YCJ 2 15/16							
75mm		YCJ 75							

NOTE: Timken has made every effort to ensure the accuracy of this interchange, however, Timken is not liable for any errors or omissions.

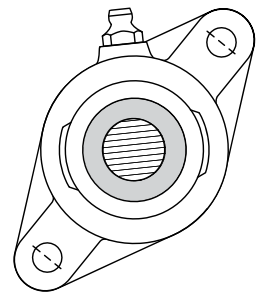
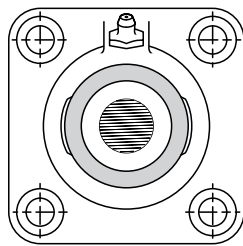
Bolded parts indicate popular bearing sizes.

NOTE: Most Y Series industrial bearing inserts can be equipped with Shaft Guarding Technology™ for shaft protection, add SGT to the part number when ordering.

Stronger. By Design.



FAFNIR® BALL BEARINGS 4-BOLT & 2-BOLT FLANGES Replacement Bearings for Browning



4-BOLT & 2-BOLT FLANGES WITH ECCENTRIC LOCKING

INDUSTRIAL INSERT					STANDARD INSERT				
Shaft Size	4-Bolt Flanges		2-Bolt Flanges		Shaft Size	4-Bolt Flanges		2-Bolt Flanges	
	BROWNING	TIMKEN	BROWNING	TIMKEN		BROWNING	TIMKEN	BROWNING	TIMKEN
1/2"	VF4E-208	RCJ 1/2	VF2E-208	RCJT 1/2	1/2"	VF4E-108	VCJ 1/2	VF2E-108	VCJT 1/2
5/8"	VF4E-210	RCJ 5/8	VF2E-210	RCJT 5/8	5/8"	VF4E-110	VCJ 5/8	VF2E-110	VCJT 5/8
11/16"		RCJ 11/16		RCJT 11/16					
17mm		RCJ 17		RCJT 17	17mm		VCJ 17		VCJT 17
3/4"	VF4E-212	RCJ 3/4	VF2E-212	RCJT 3/4	3/4"	VF4E-112	VCJ 3/4	VF2E-112	VCJT 3/4
20mm		RCJ 20		RCJT 20	20mm		VCJ 20		VCJT 20
7/8"		RCJ 7/8		RCJT 7/8	7/8"	VF4E-114	VCJ 7/8	VF2E-114	VCJT 7/8
15/16"	VF4E-214	RCJ 15/16	VF2E-214	RCJT 15/16	15/16"	VF4E-115	VCJ 15/16	VF2E-115	VCJT 15/16
1"	VF4E-215	RCJ 1	VF2E-215	RCJT 1	1"	VF4E-116	VCJ 1	VF2E-116	VCJT 1
25mm	VF4E-216	RCJ 25	VF2E-216	RCJT 25	25mm		VCJ 25		VCJT 25
1 1/16"		RCJ 1 1/16		RCJT 1 1/16					
1 1/8"		RCJ 1 1/8		RCJT 1 1/8	1 1/8"	VF4E-118	VCJ 1 1/8	VF2E-118	VCJT 1 1/8
1 3/16"	VF4E-218	RCJ 1 3/16	VF2E-218	RCJT 1 3/16	1 3/16"	VF4E-119	VCJ 1 3/16	VF2E-119	VCJT 1 3/16
1 1/4S"		RCJ 1 1/4S	VF2E-220S	RCJT 1 1/4S	1 1/4S"	VF4E-120S	VCJ 1 1/4S	VF2E-120S	VCJT 1 1/4S
30mm	VF4E-219	RCJ 30	VF2E-219	RCJT 30	30mm		VCJ 30		VCJT 30
1 1/4"	VF4E-220	RCJ 1 1/4	VF2E-220	RCJT 1 1/4	1 1/4"	VF4E-120	VCJ 1 1/4	VF2E-120	VCJT 1 1/4
1 5/16"		RCJ 1 5/16		RCJT 1 5/16					
1 3/8"	VF4E-222	RCJ 1 3/8	VF2E-222	RCJT 1 3/8	1 3/8"	VF4E-122	VCJ 1 3/8	VF2E-122	VCJT 1 3/8
1 7/16"	VF4E-223	RCJ 1 7/16	VF2E-223	RCJT 1 7/16	1 7/16"	VF4E-123	VCJ 1 7/16	VF2E-123	VCJT 1 7/16
35mm		RCJ 35		RCJT 35	35mm		VCJ 35		VCJT 35
1 1/2"	VF4E-224	RCJ 1 1/2	VF2E-224	RCJT 1 1/2	1 1/2"	VF4E-124	VCJ 1 1/2	VF2E-124	VCJT 1 1/2
1 9/16"		RCJ 1 9/16		RCJT 1 9/16					
40mm		RCJ 40		RCJT 40	40mm		VCJ 40		VCJT 40
1 5/8"	VF4E-226	RCJ 1 5/8	VF2E-226	RCJT 1 5/8	1 5/8"		VCJ 1 5/8		VCJT 1 5/8
1 11/16"	VF4E-227	RCJ 1 11/16	VF2E-227	RCJT 1 11/16	1 11/16"	VF4E-127	VCJ 1 11/16	VF2E-127	VCJT 1 11/16
1 3/4"	VF4E-228	RCJ 1 3/4	VF2E-228	RCJT 1 3/4	1 3/4"	VF4E-128	VCJ 1 3/4	VF2E-128	VCJT 1 3/4
45mm		RCJ 45		RCJT 45	45mm		VCJ 45		VCJT 45
1 7/8"		RCJ 1 7/8		RCJT 1 7/8	1 7/8"		VCJ 1 7/8		VCJT 1 7/8
1 15/16"	VF4E-231	RCJ 1 15/16	VF2E-231	RCJT 1 15/16	1 15/16"	VF4E-131	VCJ 1 15/16	VF2E-131	VCJT 1 15/16
2S"		RCJ 2S		RCJT 2S	2S"	VF4E-132S	VCJ 2S	VF2E-132S	VCJT 2S
50mm		RCJ 50		RCJT 50	50mm		VCJ 50		VCJT 50
2"	VF4E-232	RCJ 2	VF2E-232	RCJT 2	2"	VF4E-132	VCJ 2	VF2E-132	VCJT 2
2 1/8"		RCJ 2 1/8		RCJT 2 1/8					
2 3/16"	VF4E-235	RCJ 2 3/16	VF2E-235	RCJT 2 3/16	2 3/16"	VF4E-135	VCJ 2 3/16	VF2E-135	VCJT 2 3/16
55mm		RCJ 55		RCJT 55	55mm		VCJ 55		VCJT 55
2 1/4"	VF4E-236	RCJ 2 1/4							
2 3/8"		RCJ 2 3/8							
2 7/16"	VF4E-239	RCJ 2 7/16							
60mm		RCJ 60							
2 11/16"	VF4E-243	RCJ 2 11/16							
70mm		RCJ 70							
2 15/16"	VF4E-247	RCJ 2 15/16							
75mm		RCJ 75							

NOTE: Timken has made every effort to ensure the accuracy of this interchange, however, Timken is not liable for any errors or omissions.

Bolded parts indicate popular bearing sizes.